

Upgrading from Version 6.0 to Version 6.1

When migrating from version 6.0 to 6.1, you must uninstall version 6.0 before installing version 6.1. Before doing so you may want to save any customized textures and elements that you created in version 6.0 so that they are available in the new version.

Upgrade Checklist

1. Save custom textures from version 6.0
2. Uninstall version 6.0, saving the 6.0 catalog when prompted
3. Install version 6.1
4. Copy custom textures from 6.0 into 6.1 Textures folder
5. Import custom elements from 6.0 catalog into 6.1 catalog

Saving Custom Textures Before Uninstalling

When you uninstall Envisioneer, the Textures folder is removed from your system. If you have started a project in a previous version that you would like to continue working on, and that project uses custom textures, you should back up your existing Textures directory before uninstalling.

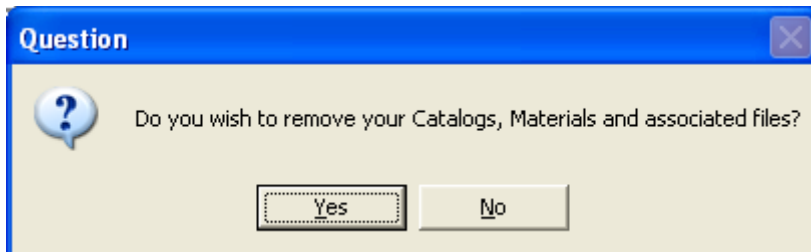
If textures that you used are not available in a newer version, a project's materials may not display correctly. If you back up your existing Textures directory, you can copy the textures in that folder to the Textures folder in the new version.

To retain your Textures directory from a previous version:

1. In *Windows Explorer*, locate the folder where Envisioneer is installed. The default path is *C:\Program Files\Cadsoft\Envisioneer*.
2. In the Envisioneer directory you will find a Textures folder. Select the Textures folder, then right-click and select **Copy**.
3. Select a location on your hard drive where you want to copy the Textures folder. This can be anywhere except the Envisioneer folder. For example, you may want to just copy it to the root (C:\).
4. Right-click the new location and select **Paste**. The Textures folder is copied to the backup location. This folder will not be removed when you uninstall Envisioneer. See *Using Saved Textures in the New Version* on page 2.

Saving Your Master Catalog

When you uninstall Envisioneer, you will be asked if you want to remove your Catalogs, Materials and associated files.



Click **No**. This will retain the Envisioneer program folder and Catalogs sub-folder on your system. If you have customized any elements in the catalog and would like to use those elements in the new version, you can import them into the Master Catalog of the new version. See *Importing Elements into the New Master Catalog* on page 2.

Using Saved Textures in the New Version

Once you have uninstalled version 6.0 and installed version 6.1, you can use *Windows Explorer* to copy the textures from the backed-up Textures folder into the Textures folder of the new version. You will be notified if duplicate textures exist. When prompted, specify that you do not want to copy and replace those textures. This will keep the new textures intact and add only your customized textures to the list.

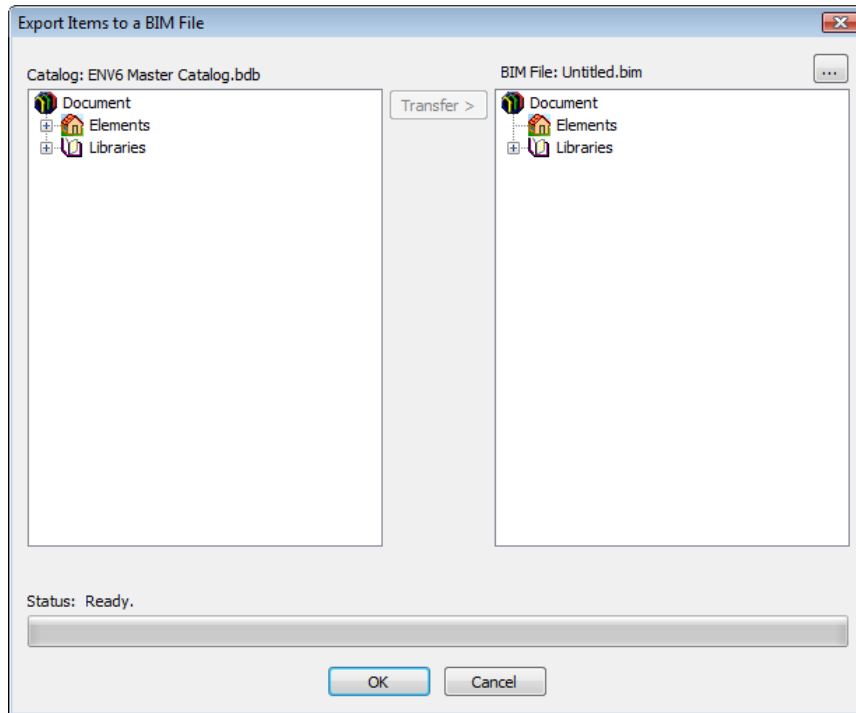
Importing Elements into the New Master Catalog

If you would like to transfer elements or libraries from the 6.0 catalog to the new catalog, you first need to export the desired content to a BIM (Building Information Management) file. You can then use the Import BIM File tool to import the content into the 6.1 catalog.

By exporting content to a BIM file you can also share your catalog content with other Envisioneer users by simply giving them the BIM file.

To export catalog content to a BIM File:

1. Use the **Open Catalog** tool in Envisioneer to open the version 6.0 catalog.
2. Select **File > Catalogs > Export BIM File**. You can also launch this feature from the Element Manager or Library Manager by selecting **File > BIM File > Export**.



3. By default, the content will be copied to a new, blank BIM file. If you want to export the content to an existing BIM file (i.e. add to a BIM file), click above the right pane and open the BIM file that you want to export to.
4. In the left pane of the **Export Items to BIM File** dialog, select the content that you want to export to a BIM file. To expand a group, click its plus sign (+). You can select an entire element group (e.g. Windows), individual groups (e.g. Fixed Windows), or individual elements within a group (e.g. 4' x 4' Fixed Window). The same goes for libraries.
5. Click **Transfer**. The selected content is copied to the BIM file in the right pane.
6. Continue transferring content if desired.
7. When you are finished transferring content, click **OK**.
8. In the **Save As** dialog, type a name for the BIM file in the **File name** edit box, then click **Save**.

Note: When you transfer a group or item to a BIM file, other content may be copied as well. This additional content is associated with the items you are transferring, and is necessary for the items to be properly defined. For example, if you copy the Doors group to the BIM file, the Parts group will copy over as well, because doors have parts such as hinges and doorknobs included as assemblies in their properties. Similarly, if you copy the Materials library to the BIM file, other libraries such as Patterns, Line Styles and Manufacturers will copy over as well because materials have patterns, line styles and manufacturers defined in their properties.

Note: When you copy individual groups or items to a BIM file, the structure which the group or item is part of is mimicked in the BIM file pane. For example, if you copy the 4' x 4' Fixed Window to the BIM file pane, it will appear in a folder named "Fixed", and the Fixed folder will appear under a "Windows" folder.

To import catalog content from a BIM file:

Once you have exported the catalog content from your 6.0 catalog to .bim format, you can import it into the new 6.1 catalog.

1. Use the **Open Catalog** tool to open the version 6.1 catalog.
2. Select **File > Catalogs > Import BIM File**. You can also launch this feature from the Element Manager or Library Manager by selecting **File > BIM File > Import**.
3. In the **Open** dialog, select the BIM file from which you want to import items, then click **Open**.
4. In the right pane of the **Import Items from BIM File** dialog, select the group or item that you want to transfer into the current catalog.
5. Click **Transfer**.
6. When you are finished transferring items into your catalog, click **OK**.