

Installing Envisioneer

This article provides instructions on installing, starting and authorizing your Envisioneer software. It applies to all Envisioneer 6 products (*Envisioneer Construction Suite*, *Envisioneer Professional* and *Envisioneer Essentials*).

Attention Previous Users

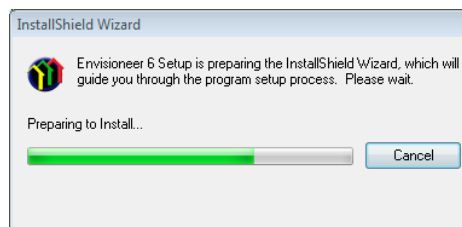
If you currently have Envisioneer 5 or earlier installed on your system, we recommend that you uninstall it before installing version 6. Before doing so, you should back up your Textures folder. The uninstall process provides you with the option of keeping existing catalogs and materials on your system in case you need them. See the following article: *Saving Folders before Uninstalling*.

Installing the Program

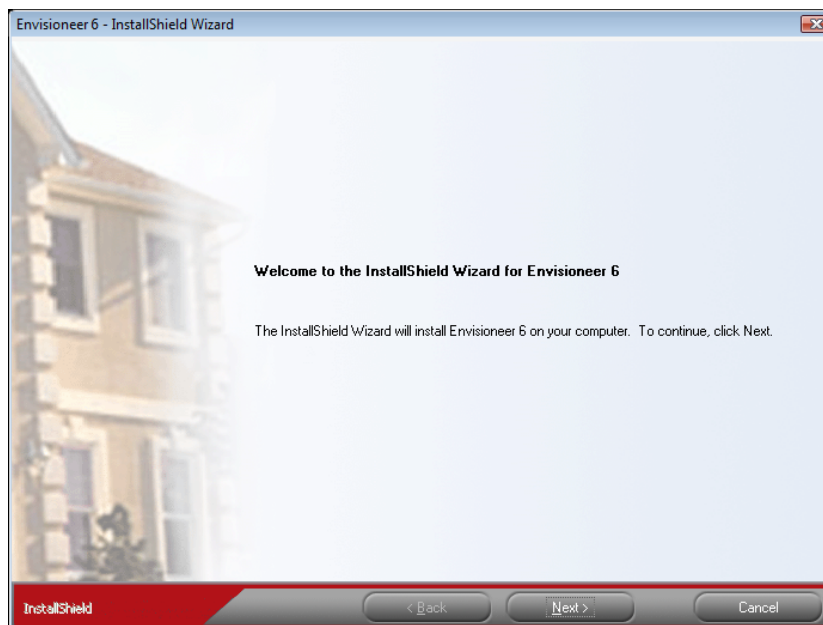
Follow the steps below to install the Envisioneer 6 software on your computer. Make sure you exit all other programs, applications and screensavers before installing.

To install the program:

1. Make sure your computer meets the minimum requirements outlined in the *System Requirements* article.
2. Begin at the *Windows®* desktop. If applicable, insert the installation CD into your CD-ROM drive. The setup begins loading:



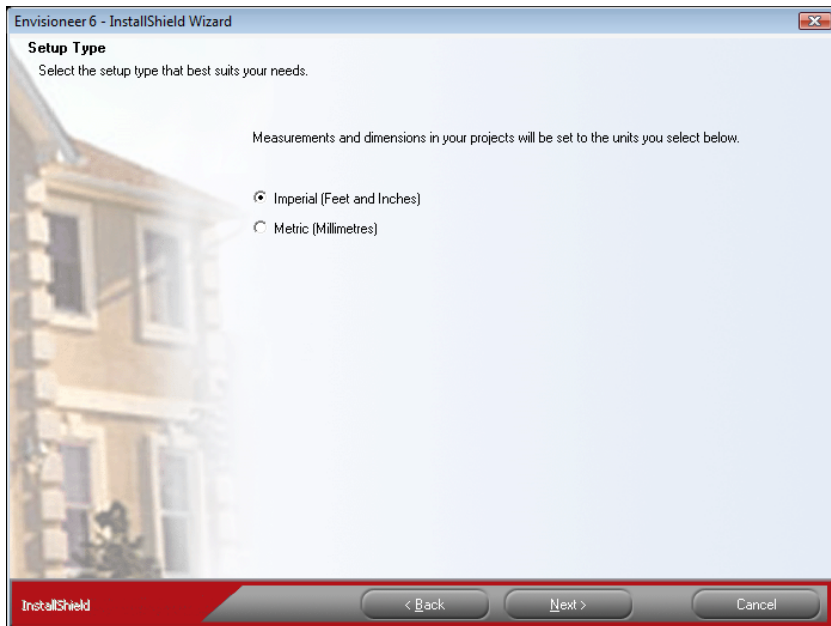
3. Please wait while the setup loads. The following screen appears:



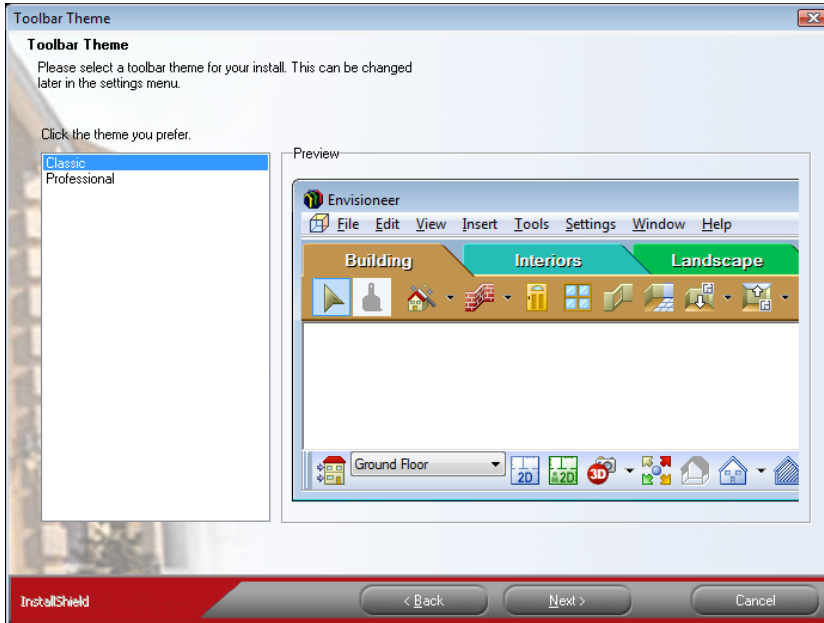
4. Click **Next**. The following screen appears:



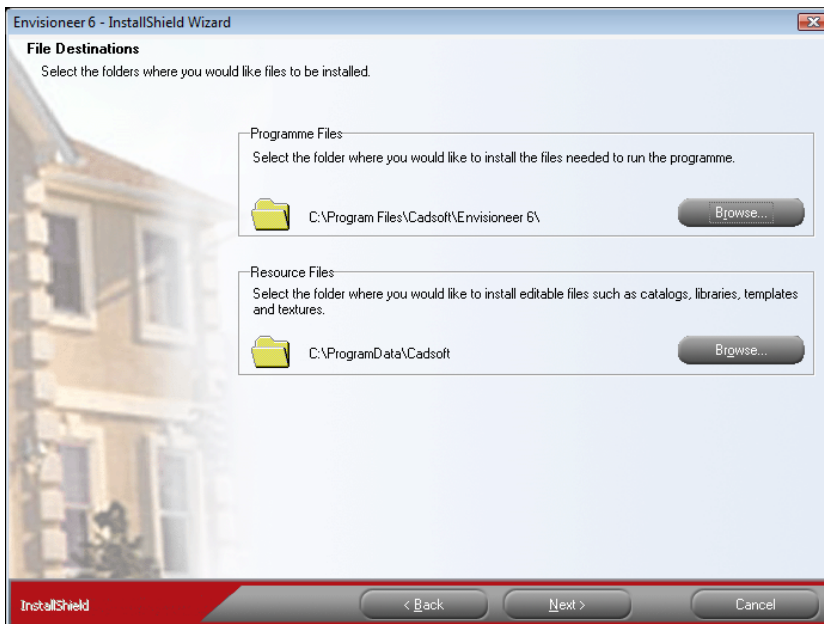
5. Read the license agreement. You can print the agreement by clicking **Print**. If you agree to the terms, enable the **I accept the terms of the license agreement** radio button, then click **Next**. The following screen appears:



6. Select the unit of measure you would like to work in, then click **Next**. The following screen appears:

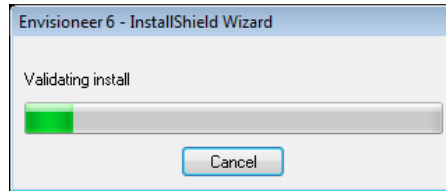


7. Select the color theme that you would like to use for your toolbars. If you want you can edit and create toolbar themes after the program has been installed.
8. Click **Next**. The following screen appears:



9. Specify the folder where you want to install the files needed to run the program. By default, these files will be installed in a folder under Program Files. If you want to install them in a different folder, click **Browse** in the *Program Files* area, then select the folder where you want to install the program files.

10. Specify the folder where you want to install files that can be edited, such as catalogs, libraries, templates and textures. If you want to install them in a folder other than the default, click **Browse** in the *Resource Files* area, then select the folder where you want to install the editable files.
11. Click **Next**. Files begin installing on your computer.

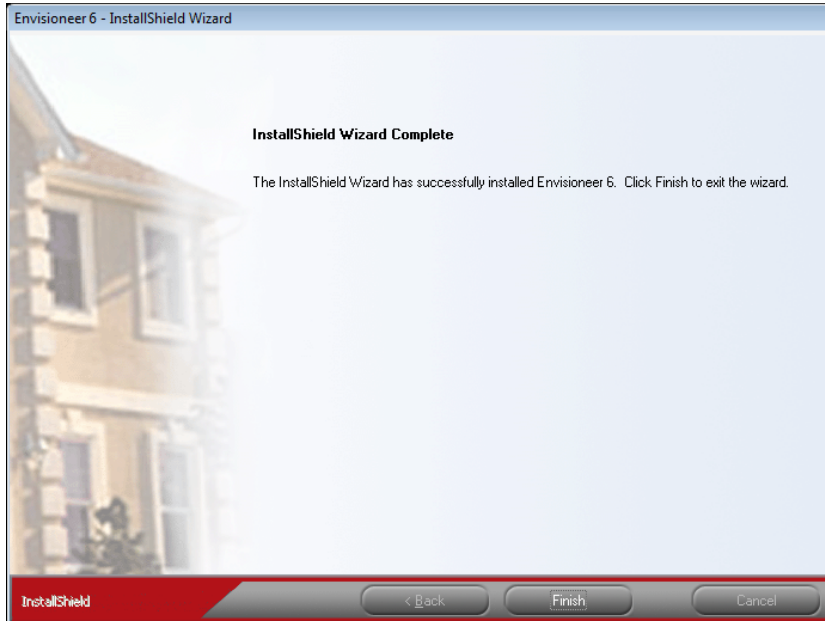


Once the files have been installed, the following screen appears:



12. If you do not want to view the README file, disable the **View the README file** check box. The README file contains important information about the program, such as system requirements, known problems at release time, and support information.
13. If you do not want to create a shortcut on your taskbar, disable the **Create a Quick Launch** shortcut check box.

14. Click **Finish**. If you chose to view the README file, it is displayed in a text editor such as *WordPad*. When you have finished viewing the file, close the text editor. The following screen appears:



15. Click **Finish** to exit the wizard. The installation is complete.

Starting the Launch Screen Manually

The installation setup begins automatically when you insert the CD into your CD-ROM drive. If it doesn't, you can start it manually by following the steps below.

To start the installation setup if it does not begin automatically:

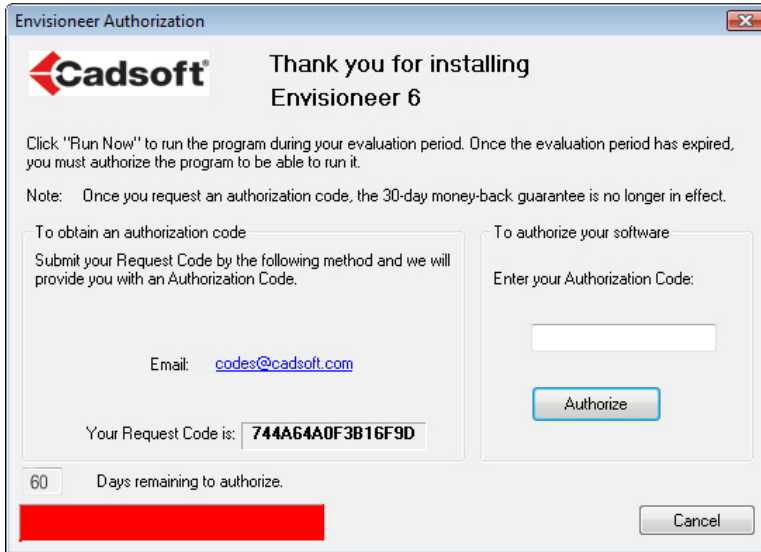
1. Make sure the installation CD is in your CD-ROM drive.
2. At the *Windows*® desktop, click the **Start** button, then select **Run**.
3. Type **D:\setup.exe** in the **Open** edit box. The letter D represents your CD-ROM drive. If you are installing from a different drive, substitute the correct letter for the letter D.
4. Click **OK**.

Starting the Program

You can start the program from your *Windows*® **Start** menu (*Start > All Programs > Cadsoft > Envisioneer 6*), or by double-clicking the Envisioneer 6 icon on your desktop.

Authorizing the Program

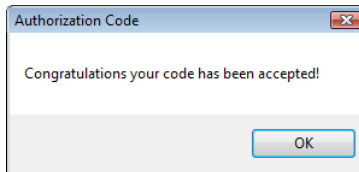
When you start Envisioneer for the first time, the Envisioneer Authorization dialog appears. This dialog indicates that you are in evaluation mode, which lasts for up to 60 days. During the 60-day evaluation period, you have full access to all features of the program. To run in evaluation mode, click **Run Now!** at the bottom of the dialog. Although you can authorize the software at any time, we recommend that you run in evaluation mode for at least 30 days. (If you authorize the software before that, the 30-day money-back guarantee will no longer be valid.)



After 60 days the software will not run until you authorize it.

To authorize the program:

1. Note the **Request Code** shown in the dialog and e-mail it to Cadsoft Corporation by clicking the E-mail link in the dialog. Once Cadsoft has received your Request Code, you will receive an authorization code.
2. Enter the authorization code in the **Enter your Authorization Code** edit box.
3. Click **Authorize**. The following dialog appears if the code was entered correctly:



4. Click **OK**. Once you have entered the authorization code, the program is authorized, and you will no longer see the Envisioneer Authorization dialog.