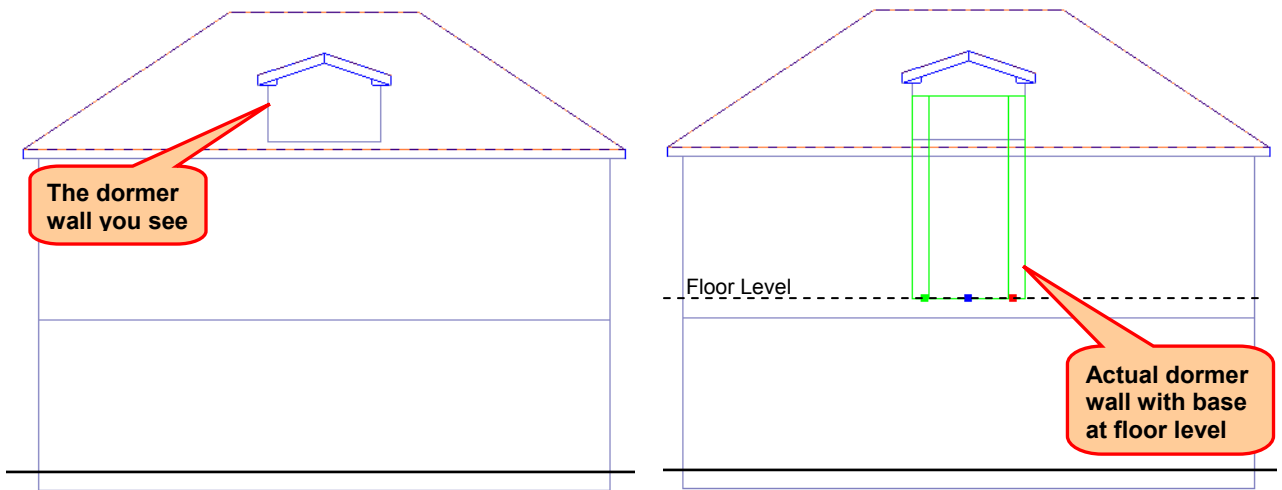


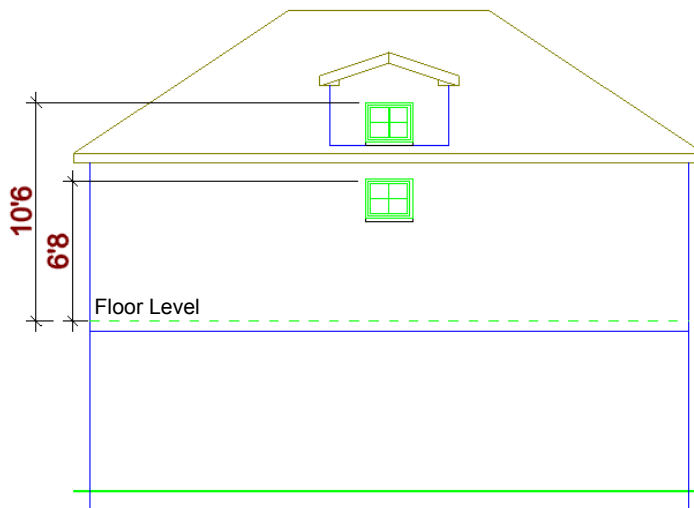
Inserting a Window in a Dormer

If you have created a dormer on the building location that supports the main roof (such as the Second Floor), the base of the dormer walls are actually located at the floor level of that building location, even though the walls appear to be above the roof. Therefore, if you try to insert a window in the dormer wall, the window will insert too low because it is inserting at the head height of the building location that supports the roof.



If you want to insert a window in a dormer wall, all you have to do is adjust its Head Height prior to (or after) inserting it.

1. Determine which building location the dormer is inserted on. If you are not sure, just hover over it with your cursor. Its location will be shown in the on-screen tool tip.
2. Select **Settings > Building Locations**, then look at the settings for the building location on which the dormer is inserted. Calculate the desired Head Height for the window you want to insert based on the building location's settings and the dormer's wall height. The Head Height is the distance from the location's floor to the top of the window. In the example below, the 6'8 value is the Head Height of the Second Floor location. The 10'6 value is Head Height we want for the dormer window.

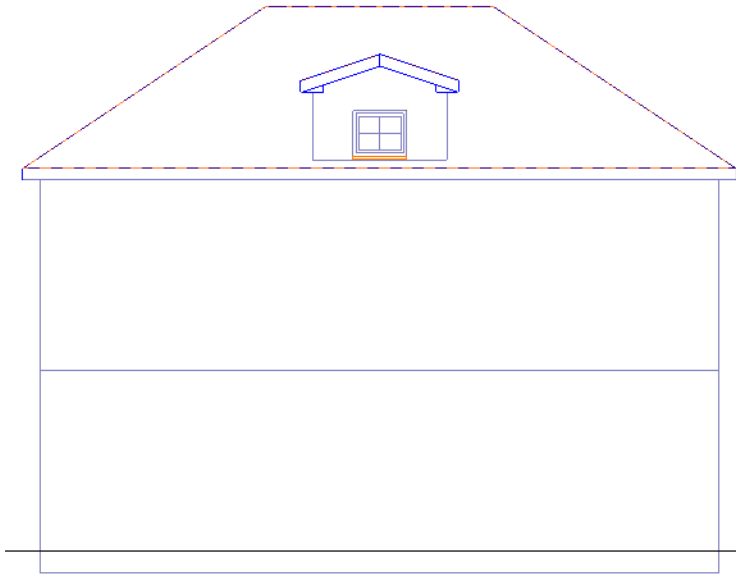


3. Click **Cancel** in the **Building Locations** dialog.
4. Select **Insert > Windows**.
5. In the catalog, select the window that you want to insert in the dormer.
6. In the Commander, click in the **Head Height** edit box and enter the desired head height that you calculated previously. Press **Enter**.

Cartesian ▾

Head height

7. Insert the window in the dormer wall.
8. Right-click and select **Finish**.



Tip: An alternate method is to insert the window at the location's current head height, and then use the Elevate tool on the right-click menu to raise the window up to the correct head height.

Tip: You may want to create a separate building location specifically for your dormer that has a suitable Head Height setting. This way a window will insert at the correct head height without any necessary adjustments.