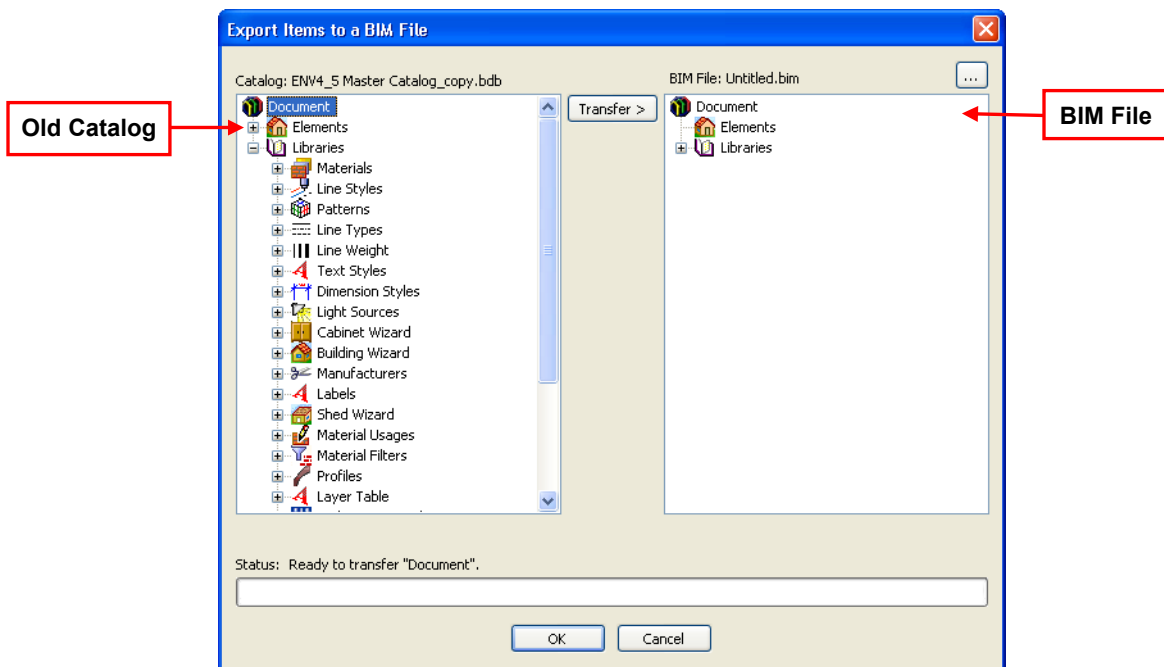


Importing Content from an Older Catalog

If you have a catalog from an older version of Envisioneer saved on your system, you can add content from that catalog to any Envisioneer 6 catalog using the new *Export to BIM File* and *Import BIM File* tools. First you open the old catalog in Envisioneer 6 and export the content to a BIM file, and then import that BIM file into your current catalog. Follow the steps below.

1. In Envisioneer 6, select **File > Catalogs > Open Catalog**.
2. In the **Open** dialog, locate the old catalog, then click **Open**.
3. In the **Version Incompatibility** dialog, make sure the **Convert a Copy** option is selected, and then click **Continue**.
4. In the **Save As** dialog, type a name for the copy in the **File name** edit box, then click **Save**.
5. With the old catalog now displayed, select **File > Catalogs > Export BIM File**.
6. In the left pane of the **Export Items to BIM File** dialog, select the content that you would like to import into an Envisioneer 6 catalog. If you select the **Elements** folder, all elements will be transferred. If you select the **Libraries** folder, all libraries will be transferred. You can expand these folders and select individual sub-folders and items to transfer instead. Note that you can select only one sub-folder or item to transfer at a time.

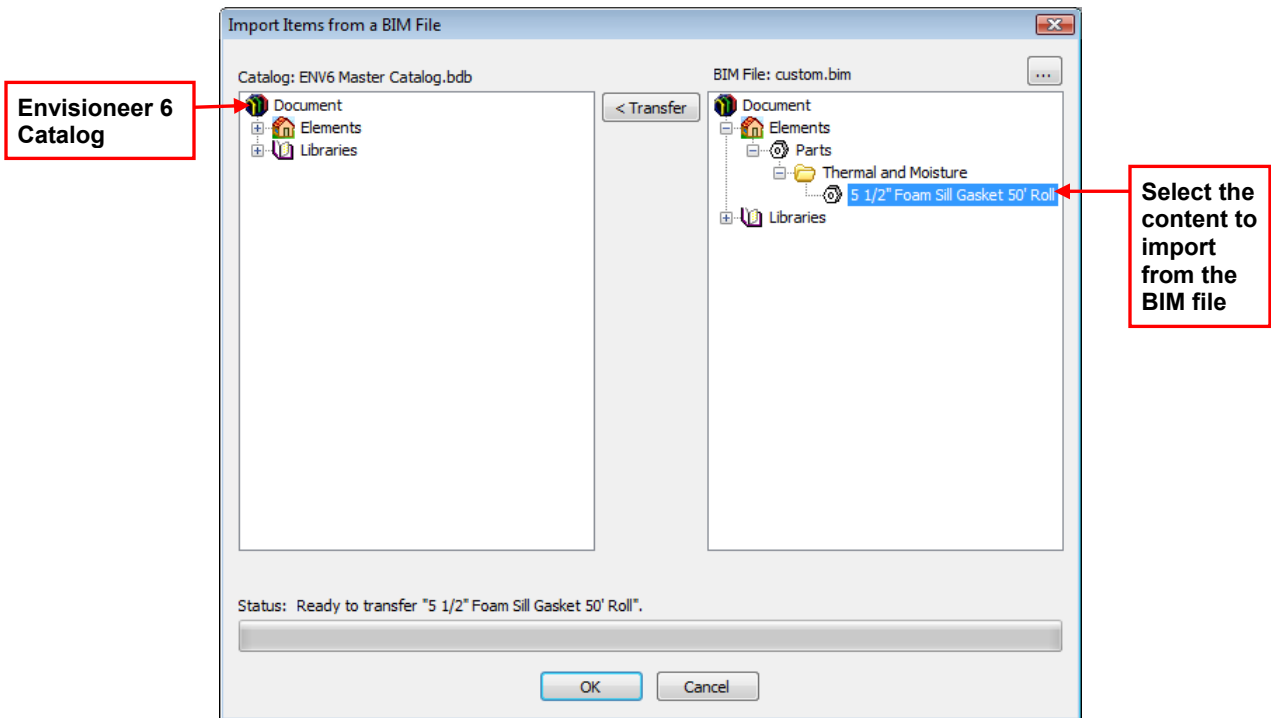


7. With the desired content selected, click **Transfer**. The content is exported to the BIM file.
8. When you are finished transferring items to the BIM file, click **OK**.
9. In the **Save As** dialog, enter a name for the BIM file in the **File name** edit box, then click **Save**.

Next you need to import the BIM file into your Envisioneer 6 catalog.

10. Select **File > Catalogs > Open Catalog**.

11. In the **Open** dialog, select the catalog that you want to import content into (e.g. ENV6 Master Catalog.bdb), then click **Open**.
12. In the **Catalog Manager**, select **File > BIM File > Import**.
13. In the **Open** dialog, select the BIM file that you exported content to, then click **Open**.
14. In the right pane of the **Import Items from BIM File** dialog, select the content that you would like to import.



15. Click **Transfer**. The content is imported into your Envisioneer 6 catalog.
16. Continue transferring items if desired, then click **OK**.

Once you have imported elements from the old catalog into the new catalog, you can delete the old catalogs from your system.