

## Importing BIM Catalogs into Envisioneer

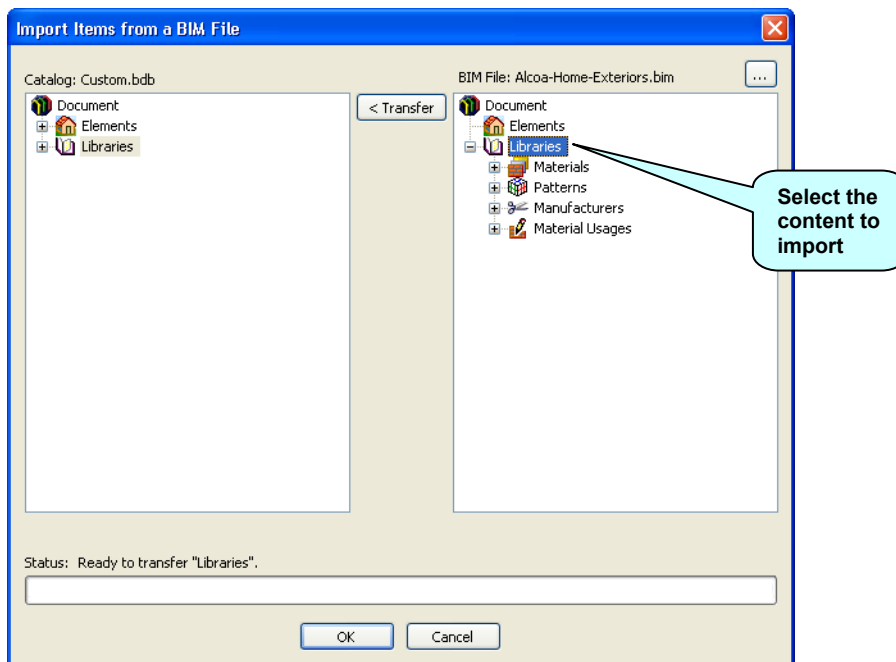
If you have found a catalog of materials that is in BIM format, such as the catalogs found on the Green 3D Home web site, you can easily import that catalog into Envisioneer.

To import a BIM catalog into Envisioneer:

1. First, save the BIM catalog to your computer's hard drive.
2. Open **Envisioneer**.
3. Open the catalog that you want to import content into (**File > Catalogs > Open Catalog**). You can import content into the Master Catalog if you want (which is already open by default), or any other catalog that you have created.

If you don't want to import the content into an existing catalog, create a new, blank catalog by selecting **File > Catalogs > Element Manager**, and then selecting **File > New Catalog** in the Element Manager.

4. Select **File > Catalogs > Import BIM File**.
5. In the **Open** dialog, locate and select the BIM catalog that you want to import, then click **Open**.
6. On the right side of the **Import Items from a BIM File** dialog, select the content that you want to import, then click **Transfer**. You can import a top-level folder (such as **Elements** or **Libraries**), or individual sub-folders or items within those folders. The content is imported into the Envisioneer catalog shown on the left side of the dialog.



7. When the desired content has been transferred, click **OK**. The new catalog content is ready to be used in Envisioneer.