

Exporting from Envisioneer

You can export your project to other file formats using Envisioneer's four Export tools: **3D Model**, **2D Drawing**, **2D Image** and **20-20 Design XML**. The following table lists the available export formats for each Export tool:

Export Tool	Available File Formats
3D Model	AutoCAD DWG and DXF Autodesk 3D Studio 3DS VRML WRL Art*lantis OPT Lightscape LP
2D Drawing	AutoCAD DWG and DXF
2D Image	BMP, JPG, TGA
20-20 Design	XML

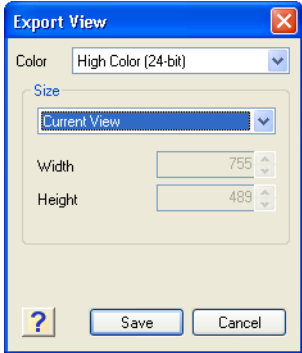
If you want to use the 3D Model or 2D Drawing export tool, you may want to set up an AutoCAD layer configuration in Envisioneer before performing the export. This assigns elements and their components to AutoCAD layers. See *Setting Up an AutoCAD Layer Configuration* later in this document.

Exporting a Drawing

Follow these steps to export your Envisioneer drawing to another file format.

1. Select **File > Export**, and then either **3D Model** or **2D Drawing** or **2D Image** or **20-20 Design .XML**.
2. In the **Save As** dialog, click the **Save as type** drop box and then select the file format you want to export to.
3. Locate the folder where you want to save the exported file.
4. In the **File name** edit box, type a name for the file (without file extension).
5. Click **Save**.
6. If you are exporting a 3D Model or 2D Drawing, a dialog appears confirming that the model has been exported successfully. Click **OK**.

- If you are exporting a 2D Image, the **Export View** dialog appears. Select the desired color and resolution settings for the image, then click **Save**.

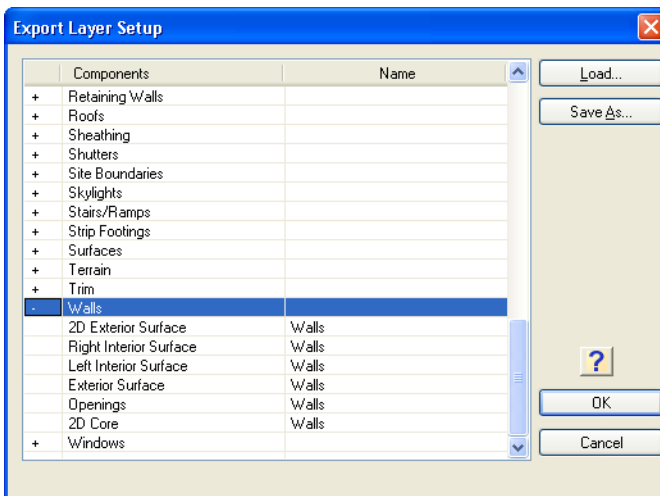


Setting up an AutoCAD Layer Configuration

If you want to export your 3D Model or 2D Drawing to an AutoCAD DWG or DXF file, you may first want to set up an AutoCAD layer configuration in Envisioneer so that elements and components are assigned to actual AutoCAD layers.

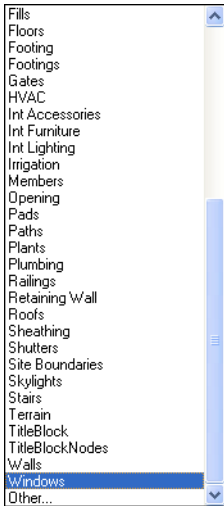
To set up an AutoCAD layer configuration:

- Select **File > Export > Export Layer Setup**.
- In the **Layer Export Setup** dialog, in the Components column, expand the element you want to specify AutoCAD layers for by clicking its plus (+) sign. The element's components are displayed below the element name.

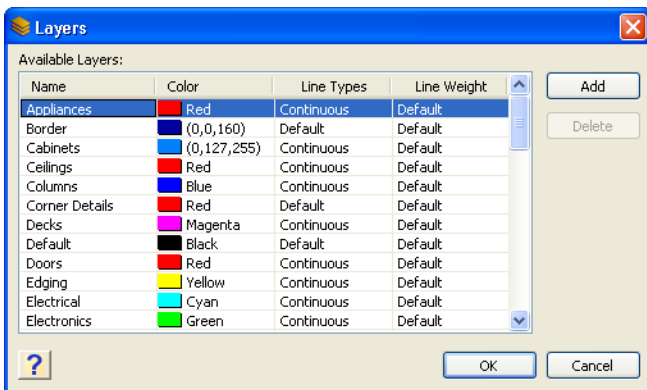


- Select the component to which you want to assign an AutoCAD layer.
- Double-click in the **Name** column next to the component's name. The column cell becomes a drop box.

- Click the drop box's down arrow to display the contents of the drop box.



- Select the desired AutoCAD layer name from the list or select **Other...** to create a new layer in the **Layers** dialog. You can define a *Name*, *Color*, *Line Type* and *Line Weight* for each layer.



- To save the current layer configuration to a file so you can use it again, click **Save As**, then specify the desired file name and save location for the file. Click **Save**.
- To load a layer configuration that you have saved into the **Layer Export Setup** dialog, click **Load**, then select the file in the **Open** dialog and click **Open**.
- Once you have finished specifying your layer setup, click **OK**.

Note: When you export your drawing to a DWG or DXF file, the layer setup currently specified in the **Layer Export Setup** dialog will be automatically applied to the file. If you have more than one layer configuration saved, make sure the correct one is loaded in the **Layer Export Setup** dialog before performing the export.

Scaling DWG and DXF Files

If you export your file to a DWG or DXF file format, you will need to scale the file in AutoCAD. Envisioneer has a scaled drawing environment. AutoCAD uses real-world units. Therefore, when the file is exported from Envisioneer it is converted to a universal scale for both Metric and Imperial drawing files.

If you are using Imperial units, scale the file by **.03937** in AutoCAD, and the file will accurately depict the original feet-and-inch dimensions used in Envisioneer.