

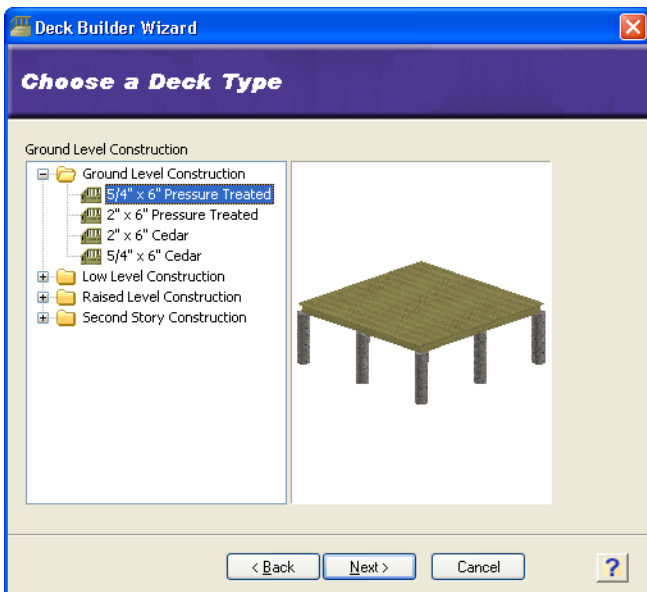
Deck Design

You can create a deck using the Deck Builder Wizard or the Deck tool. The Deck Builder Wizard builds a deck for you automatically based on settings that you specify such as the size and shape. The Deck tool is great for custom shapes because you can manually pick points to define the shape of the deck. Once you've created your deck you can quickly add a set of stairs to it with the Deck Stairs tool. Decks can be easily moved, rotated, resized and curved. You can also edit the fine details of the deck's construction.

Building a Deck with the Deck Builder Wizard

Follow these steps to build a sample ground-level deck with the Deck Builder Wizard. By following this example you will learn how to build a deck and understand the options available to you.

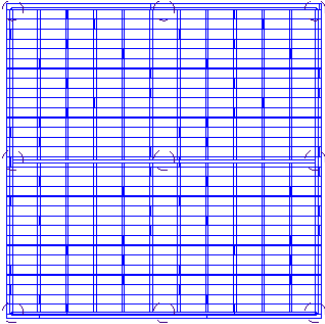
1. Select **Insert > Design Wizards > Deck Builder**.
2. On the *Welcome* screen, click **Next**.



There are four different types of decks available on the *Choose a Deck Type* screen: *Ground Level Construction*, *Low Level Construction*, *Raised Level Construction* and *Second Story Construction*. Each type gets progressively higher above grade. The available element choices for each type differ depending on the type of construction chosen. (For example, ground level decks do not include posts.) You can choose either Pressure Treated or Cedar materials for any type of deck.

3. For this example, choose the **2" x 6" Cedar** material in the **Ground Level Construction** folder, and then click **Next**.
4. The next screen lets you define the shape and size of the deck. In the *Shape* area, click on the square shape option. Remember that you can edit the shape after the deck has been inserted.
5. In the *Size* area, enter **15'** in both the **a** and **b** edit box. When specifying dimensions for your deck, you can use the preview graphic in the *Size* area to help you define them correctly.
6. Click **Next** to continue.

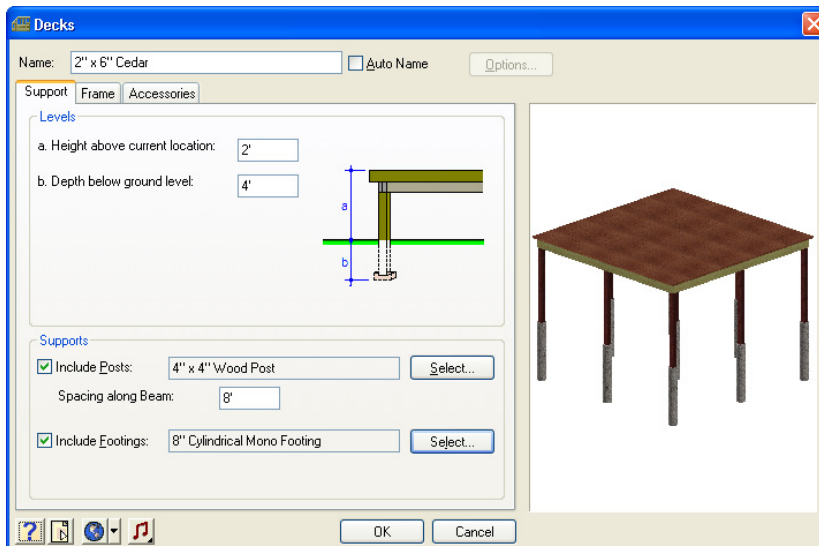
7. On the *Choose Decking Rotation and Direction* screen you can specify the orientation of the deck, and direction of the deck boards. (Obviously a square deck will appear the same for all deck rotation options.) Select the first option for both parameters and then click **Next**.
8. On the last screen, click **Finish**. The deck is now attached to your cursor, ready to be inserted.
9. Position the deck where you want it, then click to insert it. Once you've inserted the deck, its details come into view.



Editing Deck Properties

You can define settings for posts, footings, decking, beams, joists, railings and skirting.

1. Click on the edge of the deck, and then right-click and select **Properties**.
2. In the **Decks** dialog, enter **2'** in the **Height above current location** edit box. This will raise your deck above grade. Enter **4'** in the **Depth below ground level** edit box. This defines the base level of your footings below the ground.
3. Enable the **Include Posts** check box. Click next to this option, then select the **4" x 4" Wood Post** from the catalog.
4. Make sure the **Include Footings** check box is enabled, then click next to this option. Select the **8" Cylindrical Mono Footing** from the catalog.



5. Select the **Frame** tab. There are three different construction styles to choose from: *Beam on Post*, *Beam Flush* and *Beam to Post Side*. By default, the Wizard uses the Beam Flush option. You can select different materials for the Decking, Joists and Beams, as well as edit the spacing and overhang of members. We will use the default settings.
6. Select the **Accessories** tab. Here you can choose to include (or remove) a railing and/or skirting on selected deck edges as well as choose the materials you want to use for railings and skirting. Since we currently only have one edge selected, any changes made on the Accessories tab would only apply to the currently selected edge. If you want to apply changes to more than one edge, select one of the edges, then use Shift+click to select additional edges before accessing the deck's properties.
7. Click **OK**. Your deck is updated.

Resizing a Deck

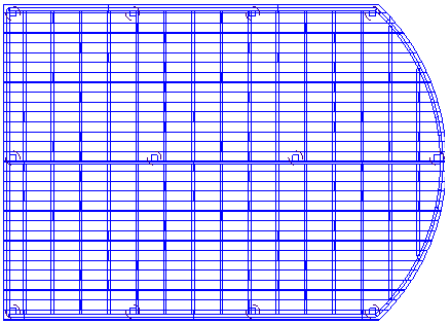
You can click and drag deck edges to change the deck's size.

1. With the deck selected, click and hold your mouse button over the solid blue grip at the center of the deck's right edge, then drag to the right.
2. When the deck is a rectangular shape, release your mouse button.

Curving a Deck

Now let's curve the end of the deck.

1. With the deck selected, right-click and select **Curve**.
2. Click and hold your mouse button over the solid blue grip at the center of the deck's right edge, then start dragging to the right.
3. When you have reached the desired curve, release your mouse button.

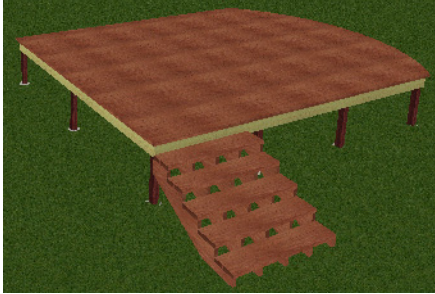


Adding Stairs

You can add stairs to your deck with a simple mouse click.

1. Select **Insert > Landscape > Decks > Deck Stairs**.
2. In the catalog panel, double-click the **Cedar** folder to open it, and then select the **5' Cedar Deck Stairs**.
3. Position your cursor near the deck edge to which you want to attach the stairs. A stair image is displayed and is attached to your cursor.
4. Position the stairs where you want them, and then click to insert them.

The stairs are created automatically with the correct number of risers required from deck level to grade.



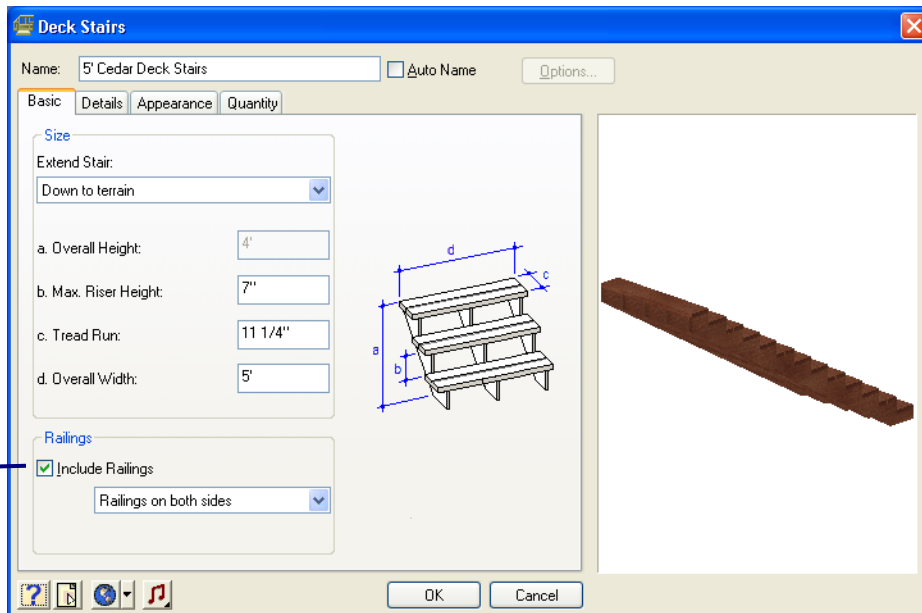
Note: If you insert the stairs on a deck edge that has a railing, a portion of the railing will be removed to accommodate the stairs, and the stairs will have railings. If the deck doesn't have a railing, the stairs won't have railings either, even if you enable the *Include Railings* option in the stair properties.

Editing Deck Stair Properties

There are a number of ways that you can customize your deck stairs.

1. Click on the inserted stairs and then right-click and select **Properties**.
2. On the *Basic* tab of the **Deck Stairs** dialog you can specify the length of the stairs by making a selection from the **Extend Stair** drop box. Choose whether they extend to the terrain, to an explicit height, to a lower location, or to the floor level of the current location. (The last option is sometimes used if the deck has been raised up after insertion.) You can also edit the overall width of the stairs, and specify whether or not you want to include railings.

Note: If the deck doesn't have a railing, the stairs won't either, even if Include Railings is enabled here.



3. On the *Details* tab you can choose the desired stringer construction style: *Notched*, *Under*, or *Side*. You can also specify measurements and materials for stringers, risers and treads.
4. Click **OK**.