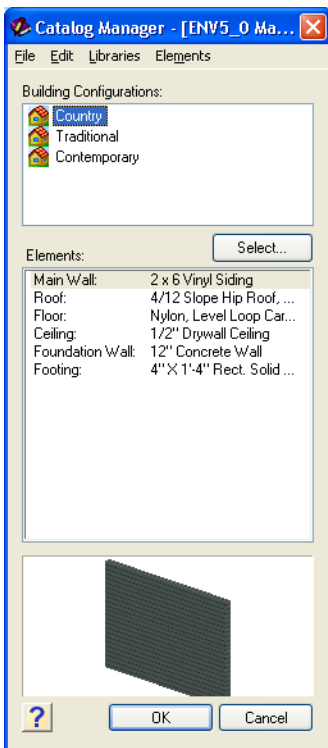


Changing the Building Wizard Options

When you use the House Builder Wizard to build a house, you are prompted to select a building configuration to use — Country, Traditional or Contemporary. Each configuration has pre-selected materials for the roof, walls, floors, foundation and footing. If you would prefer to use different materials than those shown you can make alternate selections while using the Wizard, edit the pre-defined building configurations, or create new configurations. If you choose to edit or create a building configuration, your settings will be saved in the Building Configuration library so you can use those configurations in any project.

To define a building configuration:

1. Select **File > Catalogs > Catalog Manager**.
2. In the **Catalog Manager**, select **Libraries > Building Configuration**.



3. To rename a configuration, select it in the list, then select **Edit > Rename Configuration**, or right-click in the *Building Configurations* pane and select *Rename Configuration*.
4. To delete a configuration, select it in the list, then select **Edit > Delete Configuration**, or right-click in the *Building Configurations* pane and select *Delete Configuration*.
5. To create a new configuration, select **Edit > Add Configuration**, or right-click in the *Building Configurations* pane and select *Add Configuration*. A 'New Configuration' is added to the list.
6. To edit a configuration's material selections, click on the element in the *Elements* pane that you want to define (e.g. Main Wall or Roof).
7. Click .

8. In the **Catalog Access** dialog, select the material you would like to use for the currently selected element, then click **OK** to return to the **Catalog Manager**.
9. Select the materials that you would like to use for all remaining elements.
10. Click **OK**. The catalog is saved.

Every time you run the House Builder Wizard now, your newly defined configurations will be available.