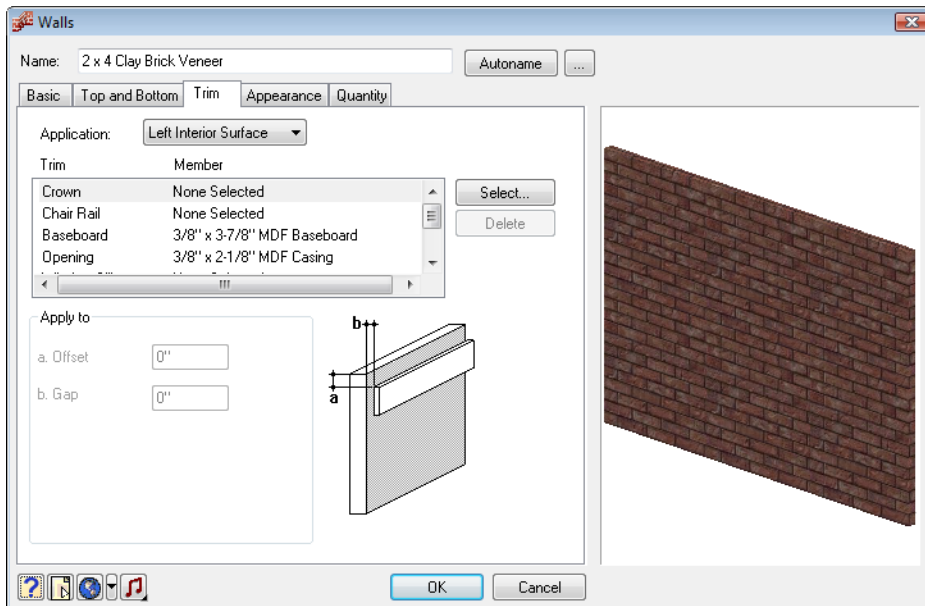


## Adding Trim to a Wall

You can select the member you want to use for each of the following types of trim: Crown, Chair Rail, Baseboard, Opening, Window Sill and Door Sill. You can even define custom trim anywhere on the wall.



### To add trim to a wall:

1. Select the wall, then right-click and select **Properties**.
2. In the **Walls** dialog, select the Trim tab.



3. From the **Application** drop box, select the side you want to add the trim to. Choices are *Left Interior Side*, *Right Interior Side* and *Exterior Side*.

The *Exterior Side* is the exterior side of an exterior wall. The *Left Interior Side* or *Right Interior Side* of a wall depends on the direction in which the wall is drawn. If you click on a wall in your drawing, you will see one end marked with a green marker, and the other end marked with a red marker. The green marker indicates the start point of the wall, or the point you started drawing from. The red marker indicates the end point. To determine the left or right side of the wall, picture yourself standing at the wall's start point (green marker) and looking toward the end point (red marker). Turning your head left or right while in this position determines which side is left, and which side is right. For example, if a wall was drawn from left to right, the left interior side would be the side closest to the top of the screen.

4. In the list of trim types (Crown, Chair Rail, etc.), select the one you would like to specify a member for.
5. Click .
6. In the **Catalog Access** dialog select the trim member that best suits your design, then click **OK**. The member appears in the trim list.
7. To delete a member from the trim list, select it, then click .

- In the **Apply to** area, specify how you would like the trim applied to the wall. Different variables are available depending on the trim type.

**Gap.** For trim around door and window openings, this is the offset of the trim from the opening. For crown moldings, baseboards and chair rails, this is the offset of the trim from the wall face.

**Offset.** For crown moldings, this is the offset of the molding from the top of the wall. For baseboards and chair rails, this is the offset of the member from the bottom of the wall.

**Offset from wall.** If creating custom trim, this determines where the member is offset from when an offset is specified. Choose from *Wall Bottom*, *Wall Top*, *Ceiling* or *Floor*.

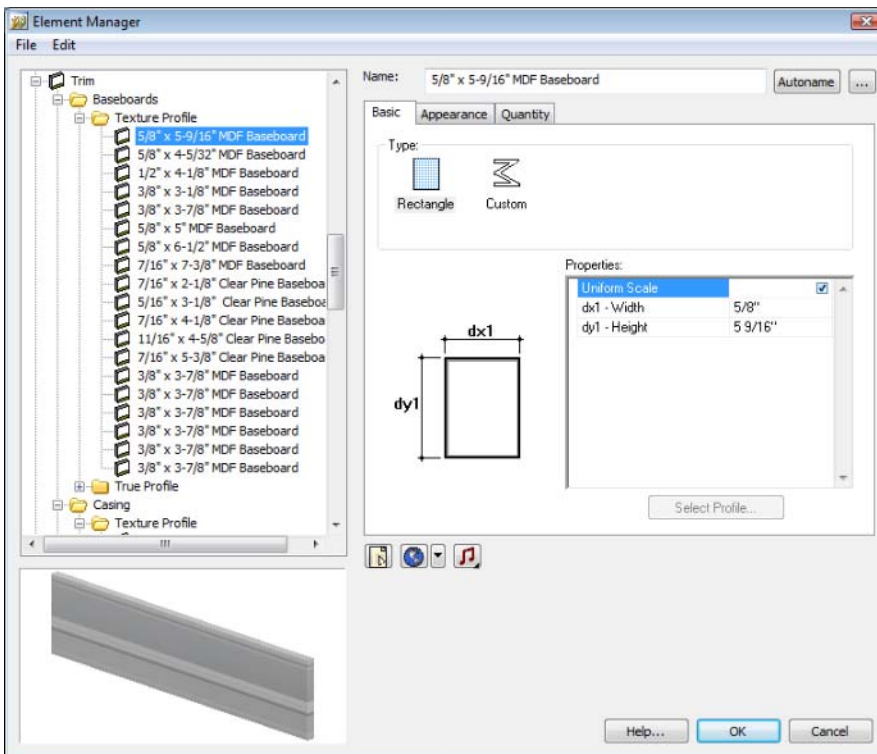
**Trim basepoint.** If creating custom trim, this determines which edge of the trim is used to measure the offset. Choose either *Top of Trim* or *Bottom of Trim*.

- Once you've selected your trim, click **OK**. The walls are updated automatically.

## Adding New Trim to the Catalog

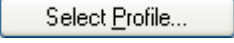
You can add to the list of trim members available through the Element Manager.

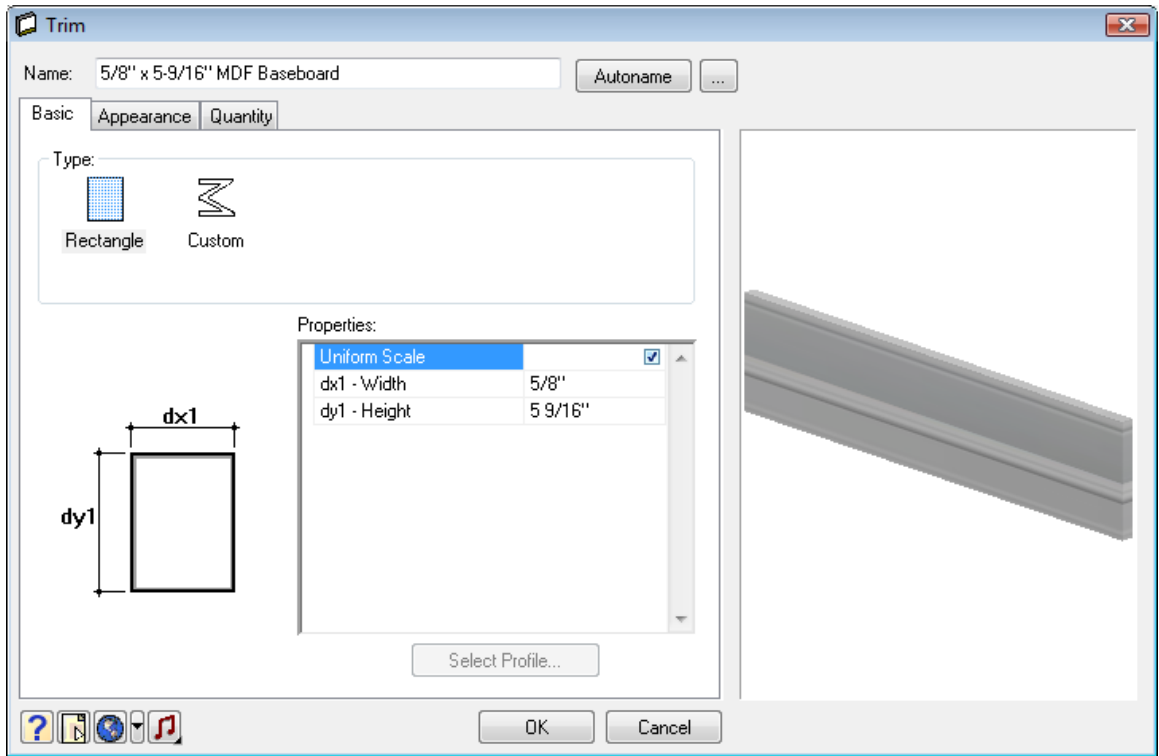
- Select **File > Catalogs > Element Manager**.
- In the **Element Manager** dialog, open the **Trim** folder in the left pane.
- Select the folder you want to add the member to. You can also select an existing member that has properties similar to the one you want to create — initially your new member will have the selected member's properties.



- Select **Edit > Add Element**, or right-click in the left pane and select **Add Element**.

5. In the **Trim** dialog, specify a name for the new trim member, and then define its width and height.

If you want to apply a custom profile to the member, select **Custom** in the *Type* pane, and then click  below the *Properties* pane. You can also specify textures and quantity information by choosing the corresponding property page tab.



6. Click **OK** to return to the **Element Manager**.
7. Click **OK** to update the catalog.