

envisioneer™

what's new

7



BIM Design

Construction Documents

Integration

Quantity Estimates

Envisioneer 7 includes some of the most powerful advancements in Building Information Modeling including strategic design enhancements, innovations in precision documentation, and huge productivity gains in on screen quantity takeoff and integration with strategic partners. .

 **Cadsoft®**

www.cadsoft.com

1 888-223-7638

sales@cadsoft.com

Building Information Modeling and Design

Envisioneer 7 offers many new time saving and powerful features for Building Information Modeling (BIM). It is now even faster and easier to create intelligent model elements that can be used throughout the life cycle of the project. The following is a list of new Version 7 features specifically related to BIM Design enhancements.

Convert Polyline to Profiles

Use the new Export Polyline to Profiles Library tool to convert a closed polyline that you have drawn into a profile that can be applied to columns, members, and trim. Profiles are saved in a library and can be used to create custom molding, beams, and other decorative features which are also quantified in material estimates.

2D Roof Component Display

A new 2D Plan component has been added to the roof's Appearance property page, allowing you to define a line style, color and line weight for the roof in 2D Plan View independent of the Elevation View. This in turn provides greater control over the appearance of the roof in inserted SmartViews.

Import Blocks as Columns

CAD blocks containing columns can now be imported and saved in the catalog. You can import DWG, DXF, 3DS and Sketchup files from the Google 3D Warehouse, then adjust their size, apply new materials, and specify quantity information for them. Imported objects are saved as Column elements which behave and quantify like a true building element.

Mirror Command Improvement

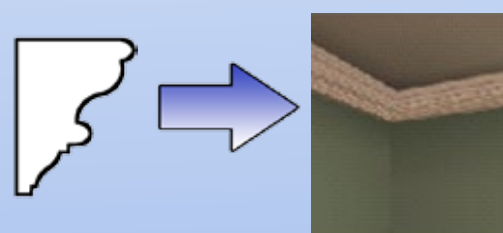
When mirroring an object, you are now prompted to specify whether or not you want to delete the original object, saving you a step if you want the original object removed. This enhancement is available in both Model View and Worksheet View.

Cabinets

Upper cabinets no longer have size constraints and can be set much shallower if desired. Perfect for low-profile applications such as medicine cabinets.

New Electrical Catalog

The new Electrical catalog contains a much broader range of elements that are represented in both 2D and 3D form. Categories include electrical switches, outlets, communication jacks, sensors, controls, exterior controls, heaters, and more. Now you can complete your electrical plans more quickly and accurately and account for all electrical items in your quantity takeoff.



what's new in 7

Building Information Modeling and Design

PDF Import Improvements

The Import PDF feature has been greatly improved in a number of ways. Large-scale vector and raster PDFs now open faster and are managed more efficiently. In multi-page files, pages can now be accessed more quickly, which is particularly beneficial when importing a large PDF file that has been created from a scanned image.

Once inserted you can use the new Resize tool to scale the image in one or both directions.

Duplicate to Location Improvement

When copying objects from one location to another, you are now prompted to specify whether or not you want to delete the original objects, saving you a step if you have inserted objects on the wrong location or simply want to move them to another location.

Floor and Ceiling Framing Additions

Specifying framing configurations for floors and ceilings is now faster and easier. You can now select the specific floor or ceiling joist, rim joist, and opening header from the catalog. You can also specify whether or not you want each component to be included in the framing or omitted.

20-20 Design Integration Improvements

When importing a design from 20-20 Technologies software, more information from the design is now recognized in Envisioneer. Materials and decorative objects such as furniture and accessories from the 20-20 design are now imported, resulting in a more robust and accurate transfer of data.

Roof Framing Addition

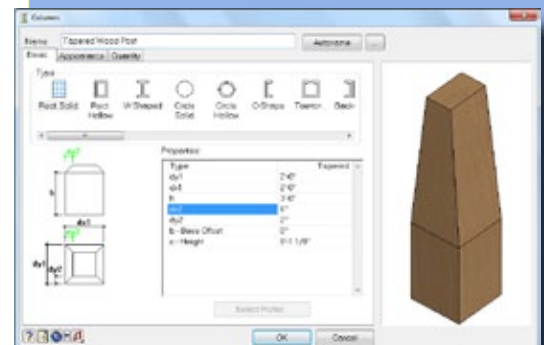
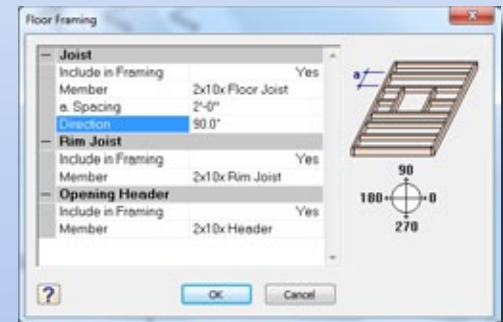
In addition to rafter settings, you can now select a member for opening headers as well. You can also specify whether or not you want each component to be included in the framing.

Tapered Columns

Columns can now be tapered by defining several new variables in the column's properties. You can control the taper distance in either direction to get the customized look you want. Taper distances can be set for both rectangular and round columns. Additional properties let you control the height at which you want the taper to begin, providing even greater flexibility when defining the column's appearance.

SketchUp Version 8 Support

When importing objects with the Object Wizard or the Element Manager, you can now import custom blocks created in SketchUp version 8. Get the latest cabinets, furniture, accessories, and more.



Construction Documents

An exciting new toolset of construction document features have been added to Envisioneer 7, both in model view and in worksheet view. These features save valuable time and increase production drastically for your working drawing process.

Join Polyline

Use the Join Polyline tool in Worksheet View to join an existing line, arc or polyline to a selected polyline. This tool is very useful when used in combination with the Export Polyline to Profile Library tool for preparing a series of lines and arcs to convert to a 3D profile.

CAD Import Improvements

The Import CAD File tool has been significantly improved, providing more versatility and functionality than ever before. Enhancements include:

- Access multiple model and paper space pages in the drawing file and view the contents of each page individually.
- A new Crop Box feature lets you select a portion of the drawing image if desired — perfect for creating instant details.
- You can also adjust the scale of each page, either by typing in a scale or by picking two points on the image and specifying the distance between points.

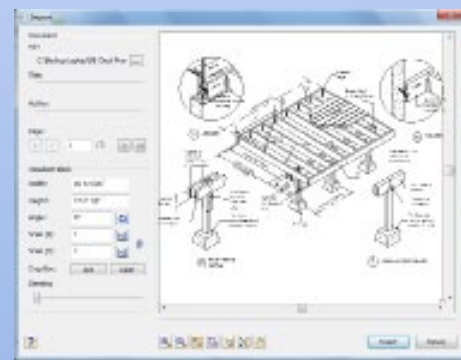
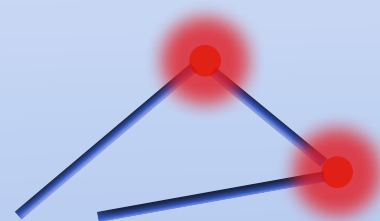
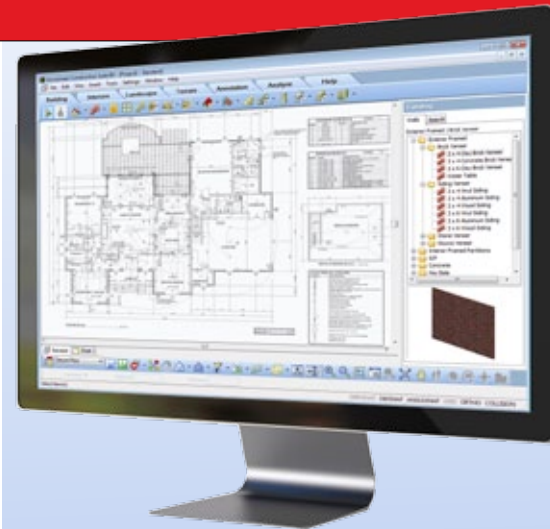
Layer Dialog Enhancements

The Layer dialog has been improved to increase usability and functionality. Improvements include:

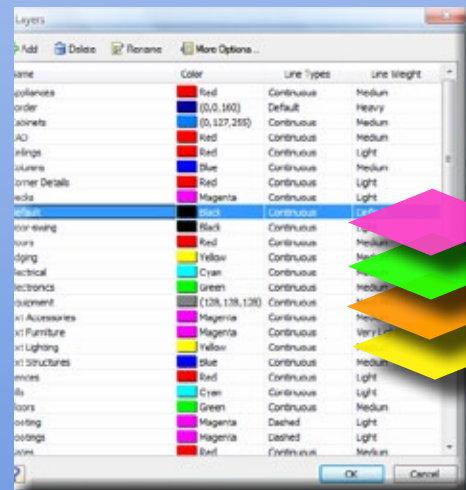
- Now you can resize the dialog easily and have it remain at the desired size when the dialog is re-opened.
- Tools such as “Set Current” and “Select All” are now available on both a standard menu and right-click menu for easy access.
- A single click in a layer property cell allows you to directly change colors, line types and line weights, making it faster and easier to edit variables.
- When multi-selecting layers for editing, a new “Invert Selection” feature instantly de-selects any layers you currently have selected and selects all others, providing a quick way to select multiple layers simultaneously.
- Moving between the Layers dialog and Layer Properties dialog, as the currently selected layer is now remembered between the two interfaces, making layer access and management faster and more efficient.

Suppress Trailing Zeros

Enable the Suppress Trailing Zeros option in your program settings to hide trailing zeros in dimensions for a cleaner, simpler look. This applies to zeros that appear after the decimal point in metric measurements or when there are 0 inches in the inches portion of a feet and inches measurement.



Autodesk
Authorized Developer



what's new in 7

Add a Whole New Dimension

Envisioneer 7 introduces the most productive dimensioning functionality available in the industry today. New dimensioning features include:

Continuous Dimensions

Use the new Continuous Dimension tool to add more dimension segments to any linear or aligned dimension. Available in both Model and Worksheet View.

Split Dimension

Use the new Split Dimension tool to split a dimension at a selected point. A great way to add extension lines to a string of dimensions. Available in both Model and Worksheet View.

Overall Dimension

The new Overall Dimension tool creates one overall dimension from two or more existing dimensions. Simply select a location for the dimension line and select the dimensions that you want to include in the overall dimension. Available in both Model and Worksheet View.

Baseline Dimensions

Use the Baseline Dimension tool to create a series of stacked dimensions along the same baseline. Control the spacing between dimension lines using the Baseline Offset variable in the dimension style properties. This is available in both Model and Worksheet Views.

Join Dimension

Use the Join Dimension tool to select a series of existing dimensions and join them into a single string. Great way to quickly eliminate unwanted extension lines. You can also use this feature to join and align dimensions in a single step. Available in both Model and Worksheet View.

Align Dimensions

Use the Align Dimension tool to instantly align one dimension with another. The tool recognizes the rotation of the dimension line and adjusts the alternate dimensions accordingly. Available in both Model and Worksheet View.

Leader Position Controls

When using the Text with Leader tool, you can now control the justification of the leader in relation to the text (Top, Middle or Bottom), as well as the distance of the leader from the text. The new Landing Gap and Leader Position variables are set on the Leader page of the Dimension Style Properties dialog.



Productivity Enhancements

Print Scale Override

Each view window now has a Print Scale setting that is independent of the drawing scale. This means that you can make a view larger or smaller when outputting to a printing device without having to adjust the original drawing scale or annotation settings. When you edit the print scale, things like text and dimensions scale in such a way that they are proportional to the rest of the drawing.

Auto Scroll Improvement

You can now choose to activate Auto Scroll by pressing the CTRL key on your keyboard rather than having it active all the time, giving you precise control over its use and preventing unwanted scrolling. Auto Scroll is particularly useful when you are drawing an element such as a wall and discover that you need to scroll the drawing area to be able to continue drawing it. Also great for tracing PDFs and DWG files for on screen estimating.

New from Template Tool

Use the New from Template tool to start a new project that is based on a specific template drawing stored on your system. The new project will have all the settings defined in the template.

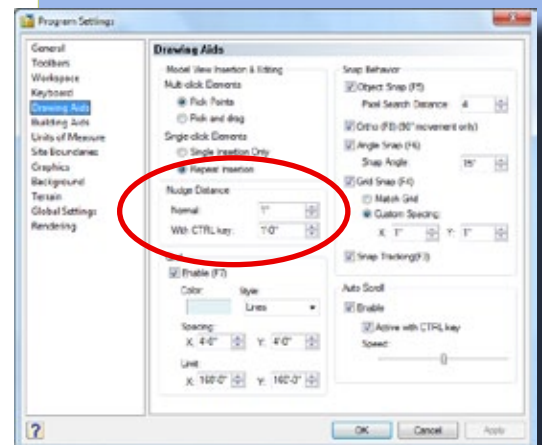
You can create your own template by simply setting up a blank project the way you want it, then saving it. You can define and save the following types of information in a template:

- Wall framing configurations
- Building Location settings
- Program Settings
- View Window settings
- Dimension settings
- Drafting preferences

Nudge Enhancement

By popular request we have added a second level of control when using the Nudge tool. You can now set two nudge distances in your program settings — one when nudging an object normally using the arrow keys, and a second one when nudging using the arrow keys while pressing the CTRL key.

You can now also use the Nudge tool in Worksheet View which is great for aligning details and moving other CAD objects in small increments.



what's new in 7

Cut List Optimization

New Cut List Optimizer

Cut lists have been totally revamped in version 7. You can optimize your cut list in a variety of ways to calculate the best combination from the stock lengths available and therefore minimize waste as much as possible. You can set a number of different rules that determine how members are cut and define how you want the items in your cut list to be sorted and displayed.

The new interface allows you to show the level of detail depending on your preference and acts as a cross check for accuracy.

New Cut List display includes:

- Grouped purchased members with a tree control interface to identify exactly how each member was derived from the 3D model
- Expand and collapse controls allow you to show level of detail as desired
- Color-coded view identifies purchased members, exact members, scrapped items and skipped items individually

New optimization settings include:

Calculate Total Linear Length Only - Reports the total linear length instead of purchased lengths for members with specific usages. For example, if you want to know the total linear length of your sill plate instead of how many pieces of lumber you need, simply add Sill Plate to the usage list when this rule is selected.

Cut Down Long Members - For members with specific usages whose length exceeds the maximum purchased length defined in the member's properties, this allows the member to be cut down into shorter pieces.

Cut One Piece from Each Purchased Length - This forces each member in the model to be cut from a specific purchased member.

Group Similar Length Items - Cuts items of similar length from the same purchased length where possible which reflects the way many material orders are traditionally completed.

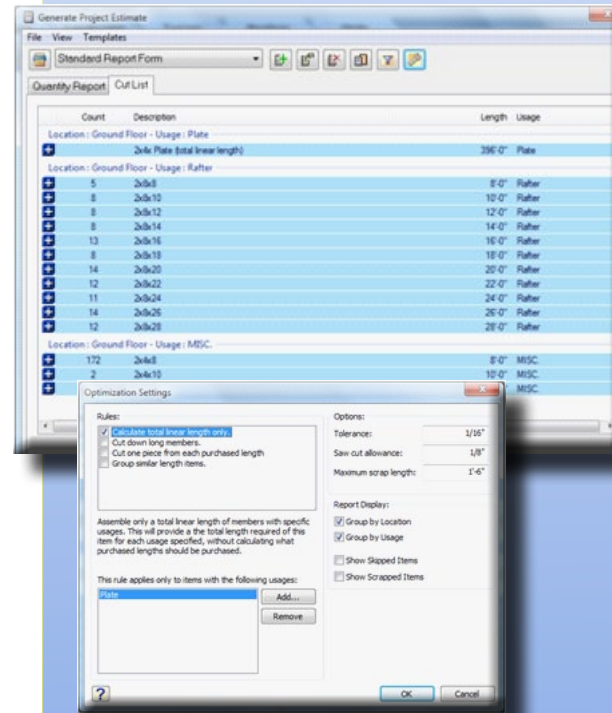
New Cut List reporting options include:

Group by Location - Organizes purchased items by building location which is perfect for creating your ship list.

Group by Usage - Sorts items according to the usages assigned to them their properties. Examples of usages are Studs, Plates, Rim Joists, Rafters, etc.

Show Skipped Items - Displays items that do not fit within the purchased member definitions and cutting rules.

Show Scrapped Items - Displays scrapped items in the cut list that are left after optimization has taken place. You can define the Maximum Scrap Length in your Optimization Settings.



Quote Generator Features

The Quote Generator has been enhanced with a whole host of new features for managing and editing quantity data and integrating with business and point of sale systems. New version 7 Quote Generator features include:

Report Designer/Report Addition

The new Quote Generator Report Designer features include:

- Add customer and/or estimator signature lines to a report
- Assign different external files to different reports for general notes and instructions
- New Group Sort tab lets you control how products are sorted
- New Product Filter tab allows lets you choose which stocked products you want to display in reports
- New Hide Non-Stock Records option
- Control whether or not comment records are included in reports
- Ability to display/hide individual records in reports without affecting the price

Groups Editor

The new Groups Editor consolidates Category, Phase and Manufacturer and new Usage setup in one, easy-to-use interface for improved quote management and reporting.

Direct Product Substitution

You can now substitute a Stock or Custom item for a product in your quote by typing directly in the SKU or Item Description field. All associated fields including Category, Phase and Usage are updated automatically with data from your Point of Sale or estimating system. The Substitute Item tool has also been enhanced so that you can choose whether you want to make the substitution in the currently selected record only or in all records that contain the product.

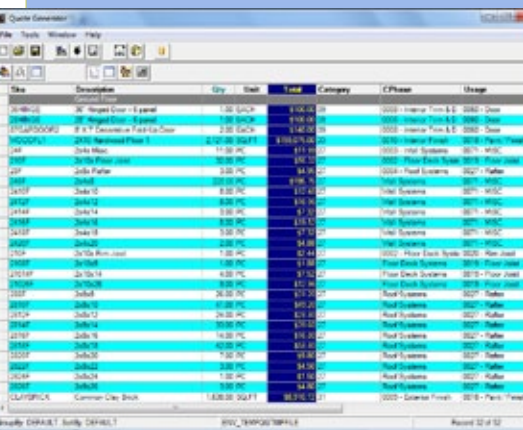
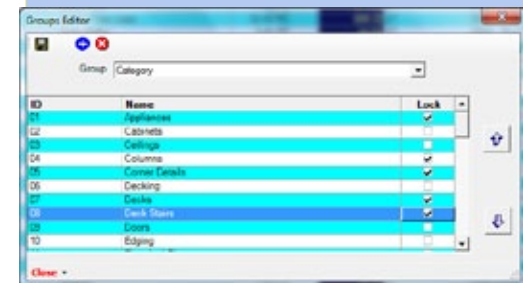
Price Update Automation

Automatically apply current pricing to records from an external CSV file, which makes managing and editing pricing faster and more convenient.

Save and Export Features

- New Auto Save feature with the ability to specify a save location
- New Group By sort option in the Export Options dialog lets you sort records according to the groups defined in the Groups Editor
- Ability to add Group Headers and/or Group Totals records for Group By options

DETEC SOLUTIONS			
1140 WOODRUFF RD., SUITE 106 GREENVILLE, SC 29607 Phone: (864) 987-1007 Fax: (864) 751-2829 Web: Email: DKUKOL@DETECSOLUTIONSLLC.COM			
Sold To:		Ship To:	
DETEC SOLUTIONS 1140 WOODRUFF RD., SUITE 106 GREENVILLE, SC 29607 Phone: (864) 987-1007 Fax: (864) 751-2829 E-Mail: dkukol@detesco			
Quote			
Category	Description	SKU	Qty Unit
01-BASEMENT			
0430	FIRE RETARD 2X12X4X8	FR232CDX	5 PC
0115	SFP 2X4X16 #2&BTR 545	S2416	40 PC
5815	SIMPSON 3-1/2X7 JOIST	SSTHHU540	5 EA
5815	SIMPSON 3-1/2X7 JOIST	SSTHHU548	92 EA
02-1ST FLOOR - WALL SYSTEM			
1380	PNE 1X6XRL #2 S45	P14CCM	106 LF
1380	PNE 1X6XRL #2 S45	P16CCM	344 LF
0115	SFP 2X4X16 #2&BTR 545	S2416	83 PC
0405	TRTD PNE 2X4X12 #1 ABV	T2412JAG	4 PC
03-2ND FLOOR - FLOOR SYSTEM			
8005	1/2" x 6" Sill Studs - Owens Corning	MLLNG	1063 LMT
05-2ND FLOOR - WALL SYSTEM			
0705	FIR 2X2 4X8 STURD-I	F2322FTG	2 PC
0430	FIRE RETARD 1X6X2 4X8	FR152CDX	62 PC
8005	Simpson AB Post Base 3-1/2" x 5-1/4"	MLLNG	964 EA
1380	PNE 1X6XRL #2 S45	P14CCM	335 LF
1380	PNE 1X6XRL #2 S45	P16CCM	1373 LF
0115	WW 2X8X16 #2&BTR	S2814	3 PC
0115	SFP 2X4X16 #2&BTR 545	S2414	42 PC
0115	SFP 2X4X16 #2&BTR 545	S2414	183 PC
0115	WW 2X8X16 #2&BTR	S2816	180 PC
0115	WW 2X8X16 #2&BTR	S2816	139 PC
0115	WW 2X8X16 #2&BTR	S2810	9 PC
5815	Z-MAX 2X6 4 SGL JOIST	S2812	9 PC
0405	TRTD PNE 2X4X12 #1	T2312JAG	49 EA
0405	TRTD PNE 2X4X12 #1	T2312JAG	3 PC
0210	TRTD PNE 2X4X12 #1 ABV	T2412JAG	8 PC
0210	TJ.LVL 1.34X14X12	TJ.LVL1412	6 PC
0210	TJ.LVL 1.34X14X14	TJ.LVL1414	6 PC
0210	PBL PARALLAM	TJ.LV.312T514	204 LF
06-3RD FLOOR - FLOOR SYSTEM			
7145	GE PL SUBFLOR ADH 290Z	GE877000	292 EA
8005	Simpson STC Truss Cld	MLLNG	363 EA
0710	OSB 23/32 4X8 STURD-I	OSB2322FTG	876 PC
1380	PNE 1X6X12 #2	P1122PR	292 PC
0115	SFP 2X4X16 #2&BTR 545	S2416	581 PC
0115	WW 2X8X16 #2&BTR	S2812	213 PC
0115	WW 2X8X16 #2&BTR	S2816	178 PC
0115	WW 2X8X16 #2&BTR	S2806	269 PC
0115	WW 2X8X12 #2&BTR	S2812	8 PC
0115	WW 2X8X16 #2&BTR	S2816	207 PC
0115	WW 2X8X16 #2&BTR	S2816	207 PC
5815	SIMPSON 2-3/4X4-10	SSTAS9	427 EA
5815	Z-MAX 2X6 SGL JOIST	SSTLS2B2	877 EA
0115	WW 2X12X10 #2&BTR	SW21210	33 PC
0115	WW 2X12X14 #2&BTR	SW21214	3 PC



what's new in 7

Business System Integration



Integration with the Constellation Home Builder Systems

Envisioneer now integrates with the series of software from Constellation Home Builder Systems. Whether you are using Envisioneer as a design tool or for on-screen digital takeoff, the integration of these systems now forms a more robust solution that encompasses design, takeoff, accounting, project management, scheduling, estimating, and job costing.

Envisioneer integrates with the following software from Constellation Home Builder Systems:

HomeDev Pro

HomeDev Pro streamlines your business through powerful management by exception processes, creating unprecedented levels of control and improved profitability. Accomplish more with your software, and take advantage of workflows by delegating administrative tasks to automation, using your time more effectively.

NEWSTAR

NEWSTAR is a comprehensive suite of integrated modules designed to help you build more homes with better profitability and increased efficiency. Working with a single database, NEWSTAR ensures that all your employees are working off the same view of the data and gives the builder real time control over all of its business processes. NEWSTAR incorporates all aspects of your business including accounting, production, warranty, scheduling.

FAST

The FAST Enterprise System™ offers a comprehensive ERP system and management tool for builders and developers throughout North America. This fully integrated, single database, single-point-entry system consolidates all operational functions on one platform, offering extensive custom financial, production, sales, scheduling, and warranty feature sets.

Buildsoft Pro

BuildSoft Pro's™ small business construction software package gives home builders and remodelers everything they need in one totally integrated single database solution. BuildSoft Pro™ is a complete package for accounting, project management, scheduling, estimating and job costing, offering the necessary built-in components at an affordable price to help remodelers and home builders manage their operations more efficiently.





FREE CUSTOMER CARE

Every new purchase of Envisioneer includes FREE Customer Care* for clients on the current version which includes the following services:

Toll-free Technical Support

Our support technicians have a strong background in architecture and construction and are standing by to assist you via telephone, e-mail or fax. They are available Monday to Friday from 8:30 AM to 5:00 PM EST.

Weekly Training Webinars

These live, online classes are led by expert instructors and focus on specific design topics. A step by step instruction booklet of each lesson is also included.

User Forum

Collaborate and communicate with fellow Envisioneer enthusiasts around the world, 24/7. Share ideas, tips and tricks with the best in the business.

Online Resource Center

Our resource center offers free software updates, FAQs, training videos, tutorials and white sheets.

* Free Customer Care and toll-free telephone available in North America

SYSTEM REQUIREMENTS

For Microsoft Windows

- Windows 7 / Vista / XP(SP3)
- 500 MHz processor or higher
- 2 GB RAM (4GB recommended)
- 1 GB minimum free hard disk space
- DVD-ROM drive
- 1024x768 display
- Video card with OpenGL driver and at least 64 MB RAM (128 MB or greater dedicated graphics card recommended)
- Windows-compatible mouse
- Internet connection for online features
- Internet browser to view online help

For Apple Macintosh

Boot Camp Option

- Requires Boot Camp
- Mac Book Pro or Mac Pro running Leopard OS or newer with Microsoft Windows® 7 / Vista(SP2) / XP(SP3) running on Boot Camp
- 2GB RAM (4 GB recommended)
- 1GB minimum free hard disk space
- Dedicated graphics card with a minimum of 128 MB RAM (256 MB or greater recommended)
- An Internet browser to view the online help
- An Internet connection for online features

Virtual Machine Option

- Requires VMware Fusion or Parallels (separate purchase of either required)
- Fusion or Parallels minimum system requirements
- Minimum requirements for the virtual machine (i.e. Windows) will be exactly the same as the Boot Camp Option requirements above.
- Note: of the Virtual Machine options, Fusion is recommended by Cadsoft's as it provides better rendering performance, however both options though will experience a performance decrease compared to Boot Camp.



Hundreds of new objects available

Visit www.green3dhome.com to get free access to dozens of new manufacturer's catalogs containing hundreds of objects ranging from engineered wood products to appliances.

