

# envisioneer™

# V.6.1

Envisioneer version 6.1 is a free update to current 6.0 clients. This exciting new update delivers some highly requested features that makes Envisioneer easier to use and more productive.

**The following key features are enhancements since 6.0:**

## Perpendicular model snapping

Walls, floors, ceilings and members can now automatically snap perpendicular to the edge of other objects, making it much easier to align objects while inserting at angles.

## Model view offset command

By popular demand, now you can select walls, lines and arcs in model view and simply offset multiple copies in a single command. A great time saver for faster design and layout.

## 20-20 Design® integration\*

The 20-20 Design® Integration module is now available with version 6.1. Now you can import complete kitchens from 20-20 Design including cabinets, appliances, moulding, and counter tops seamlessly into Envisioneer along with associated pricing, and SKU numbers.

\*Optional add-on module required



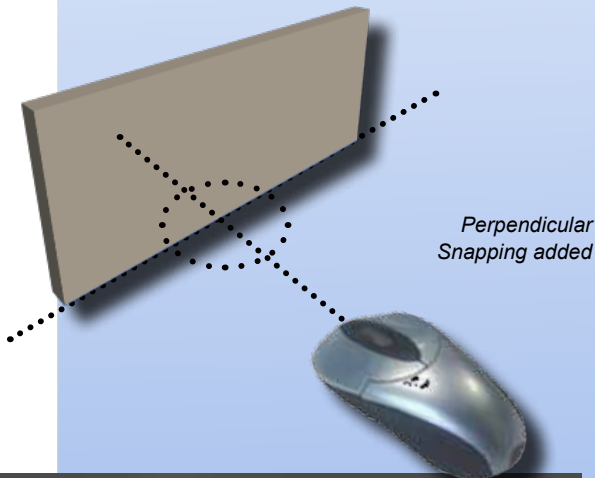
## Removal of vertical wall lines in elevations

Vertical lines in elevations and sections that appear as a result of wall intersections are removed in most instances, resulting in a cleaner SmartView drawing.

## Force wall to exterior setting

Walls sides can now be tagged as being exterior which presents effective solutions to the following situations:

- Use of interior lights and sunlight at the same time
- Rendering of structures that do not have a closed perimeter
- Multiple gable end walls within other gable ends
- Single walls that need a veneer



20-20 Design® Integration Module now available

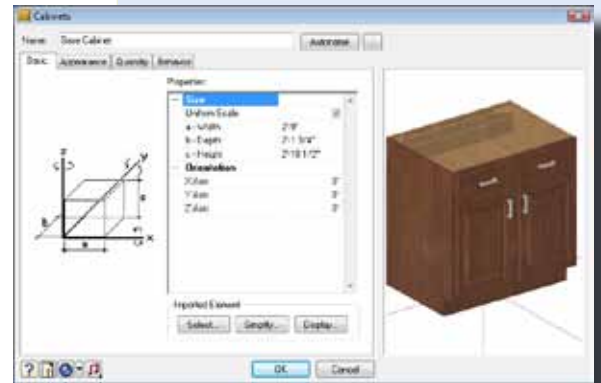


Exterior wall controls make easy work of multiple gable ends

# INCREASED PRODUCTIVITY FROM CONCEPT TO CONSTRUCTION

## Imported 3D objects can be used as cabinets

The Catalog Manager now allows for importing of DWG, DXF, SKP and XML files to be imported and used as a cabinet element. Imported geometry can also be used for quantity takeoff using assigned part numbers, pricing and additional data.



Objects can be imported and used as cabinets

## Sketchup® File import improvement

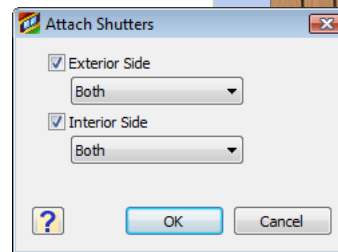
Scale is now properly controlled and set resulting in a cleaner model import from the Google 3D Warehouse® or the Sketchup sources.

## Support for AutoCAD® 2010

AutoCAD DWG files are now supported up to and including 2010 format, for saving 2D drawings and for importing 2D drawings, details, and 3D content into the Envisioneer catalogs.

## Shutter improvements

Shutters have been enhanced to allow for insertion on both the outside and the inside of walls, either independently or all at the same time.



Enhanced shutter controls

## Quantity takeoff improvements

Quantity takeoffs have been drastically improved to include the following feature enhancements:

- Consolidation of like members in the cut list
- Reduction in document size due to pruning of members
- Location variable now reports for individual elements
- Path and template location can now be set and changed for the Quote Generator

## Additional new objects available

Visit [www.green3dhome.com](http://www.green3dhome.com) to get free access to many new manufacturer's catalogs containing hundreds of objects ranging from several furniture manufacturers to new window companies.

Category	Description	SKU	Qty Unit
<b>BASEMENT</b>			
0430	FRM RET ARD 2352X408	FR2352CX	3 PC
0430	SF 24X14 #24BTR 545	545	45 PC
0430	SF 24X14 #24BTR 545	545	45 PC
0430	SF 24X14 #24BTR 545	545	45 PC
<b>1ST FLOOR - WALL SYSTEM</b>			
1300	PNR 14X8R 42 S45	P4C2M	106 LF
1300	PNR 14X8R 42 S45	P4C2M	344 LF
0420	SF 24X14 #24BTR 545	545	182 PC
0420	TRD PNR 20X12 #1 ABV	T24121AC	4 PC
<b>1ST FLOOR - FLOOR SYSTEM</b>			
0400	12" x 8" 5/8" Siller - Owens Corning	MILLNG	1063 LAMF
0430	FR 2352 X 408 (R) 1	FR2352FG	6 PC
0430	FR 1614 X 816 (R) 1	FR1614CX	62 PC
0400	SHR 0511 C 1/2" Oak CB	MILLNG	265 EA
1300	PNR 14X8R 42 S45	P4C2M	330 LF
1300	PNR 14X8R 42 S45	P4C2M	1373 LF
0110	WF 2X12 14 #24BTR 545	S2124	3 PC
0110	SF 24X14 #24BTR 545	S2416	42 PC
0110	SF 24X14 #24BTR 545	S2416	18 PC
0110	SF 24X14 #24BTR 545	S2416	182 PC
0110	WF 2X12 14 #24BTR 545	S2416	159 PC
0110	WF 2X12 14 #24BTR 545	S2416	9 PC
0110	WF 2X12 14 #24BTR 545	S2416	9 PC
0420	TRD PNR 20X12 #1 ABV	T24121AC	45 PC
0420	T2412 24X12 #1 ABV	T24121AC	8 PC
0210	T2412 24X12 #1 ABV	T24121AC	8 PC
0210	T2412 24X12 #1 ABV	T24121AC	204 LF
<b>1ST FLOOR - FLOOR SYSTEM</b>			
1100	OSB 5/8" CDX OR 2502	G587700	202 EA
0700	SHR 0511 C 1/2" Oak CB	MILLNG	265 EA
0700	OSB 5/8" CDX OR 2502	G587700	876 PC
1300	PNR 12X12 408 31/16" 4	P1212PFC	212 PC
0110	SF 24X14 #24BTR 545	S2416	581 PC
0110	WF 2X12 14 #24BTR 545	S2416	212 PC
0110	WF 2X12 14 #24BTR 545	S2416	176 PC
0110	WF 2X12 14 #24BTR 545	S2416	296 PC
0110	WF 2X12 14 #24BTR 545	S2416	8 PC
0110	WF 2X12 14 #24BTR 545	S2416	8 PC
0110	WF 2X12 14 #24BTR 545	S2416	201 PC
0110	WF 2X12 14 #24BTR 545	S2416	427 EA
0420	TRD PNR 20X12 #1 ABV	T24121AC	27 EA
0110	WF 2X12 14 #24BTR 545	S2416	33 PC
0110	WF 2X12 14 #24BTR 545	S2416	3 PC

