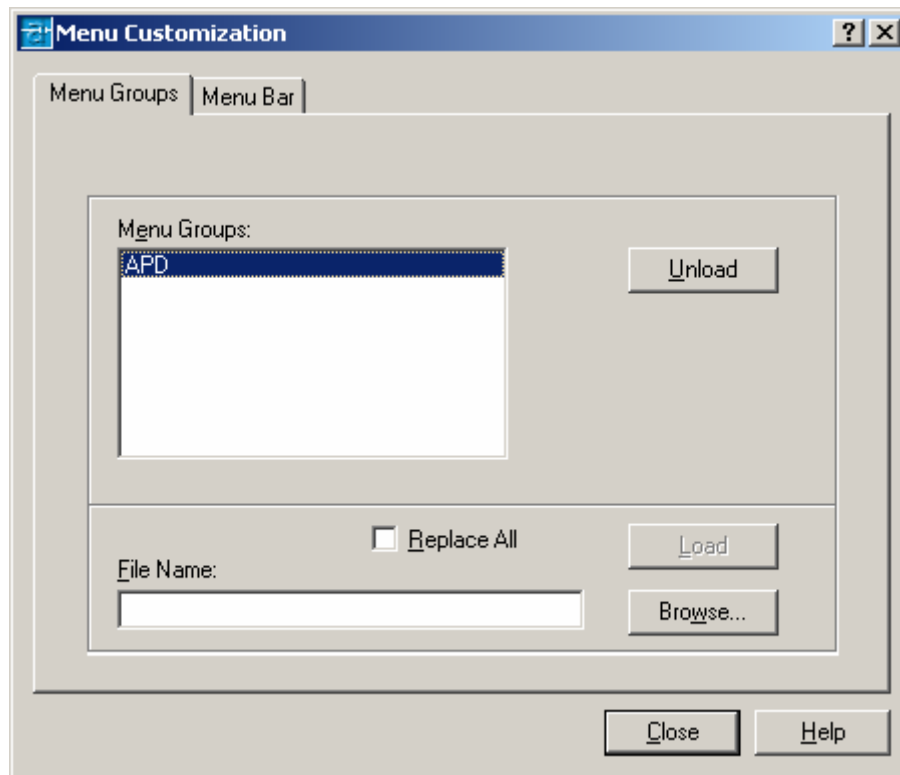


Overview

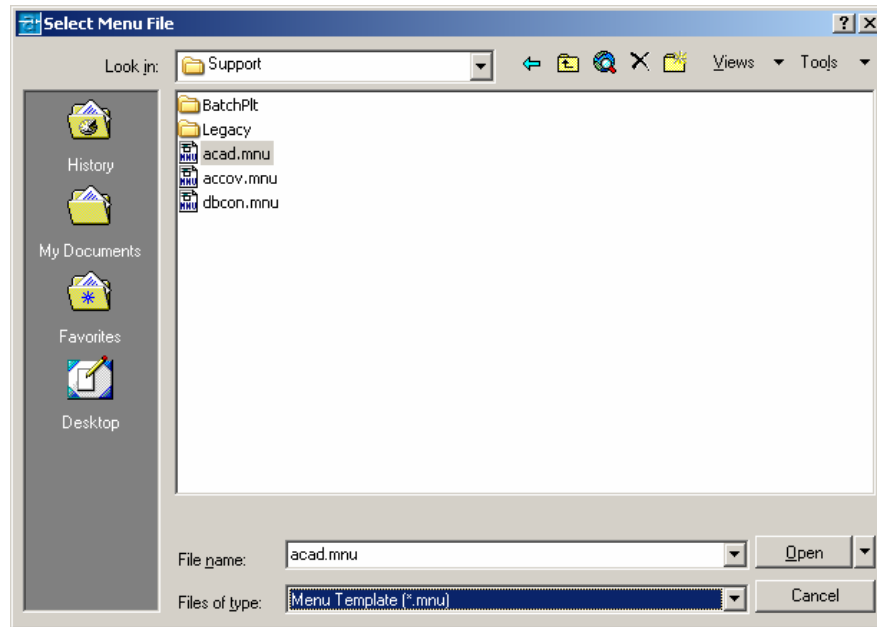
Setting up target paths for Autocad and APDesign to have them as two individual programs. The procedure below steps you through adding a profile to your list of profiles, loading menus, and selecting toolbars to display and setting the targets.

Procedure

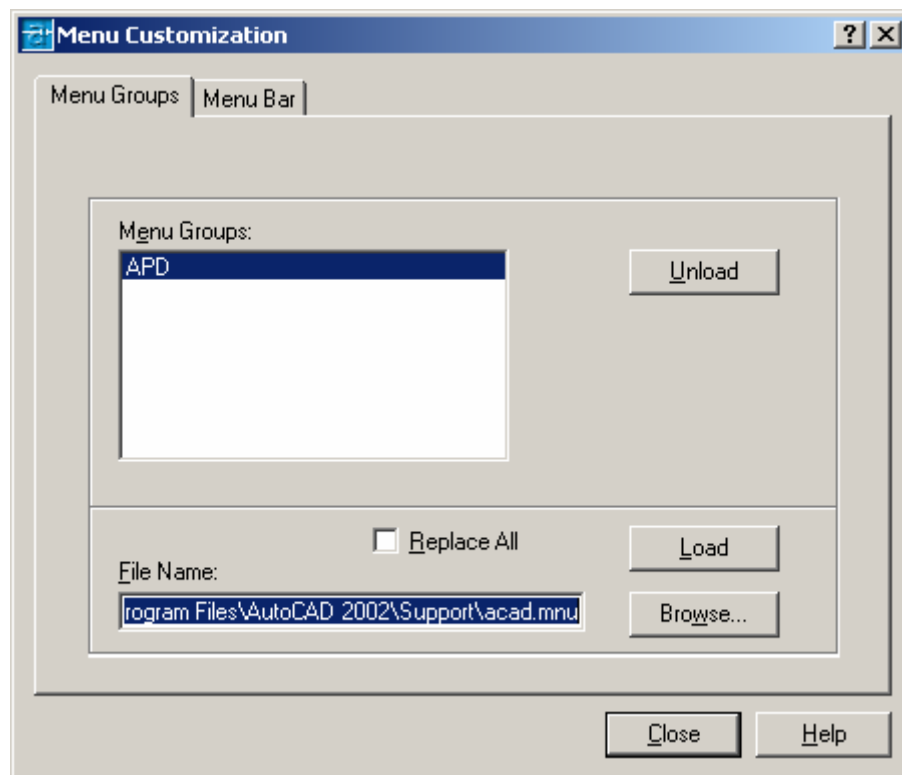
1. Open Autocad and load your **Acad.mnu** file by typing **menuload** at the command prompt The **Menu Customization** dialog box appears.



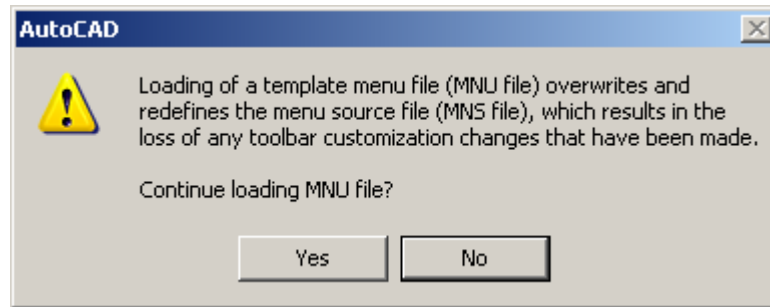
2. Click on Browse and look for **acad.mnu** from C:\Program Files\Autocad 2002\Support Folder and click **Open**.



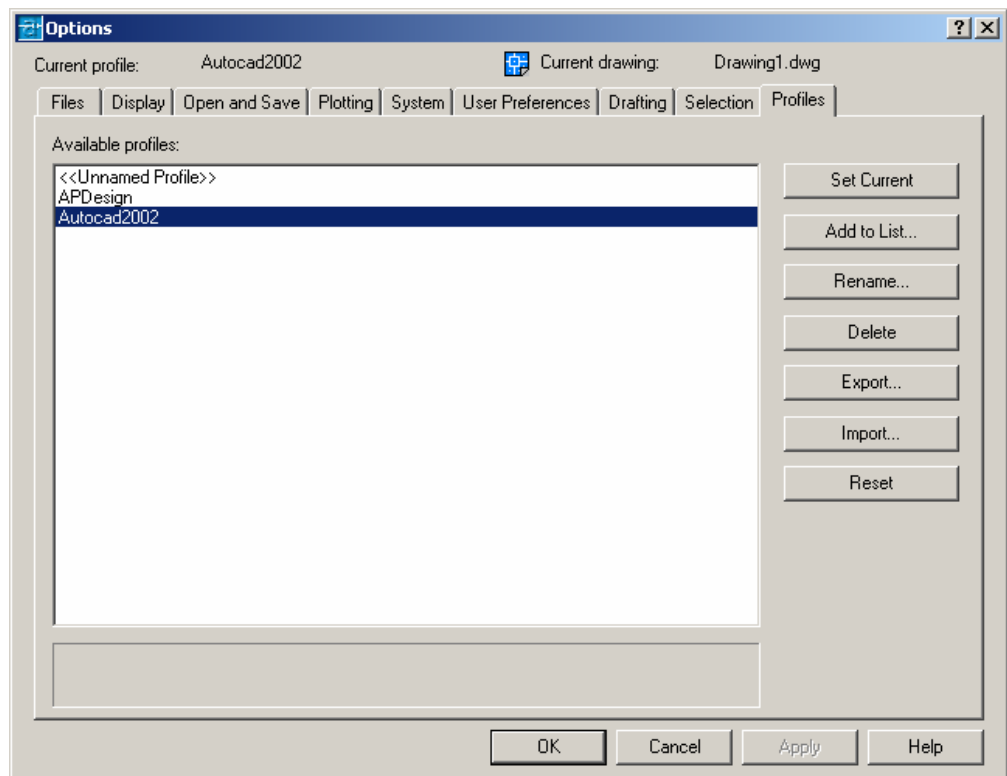
2. Click on **load** in the **menu Customization** dialog box.



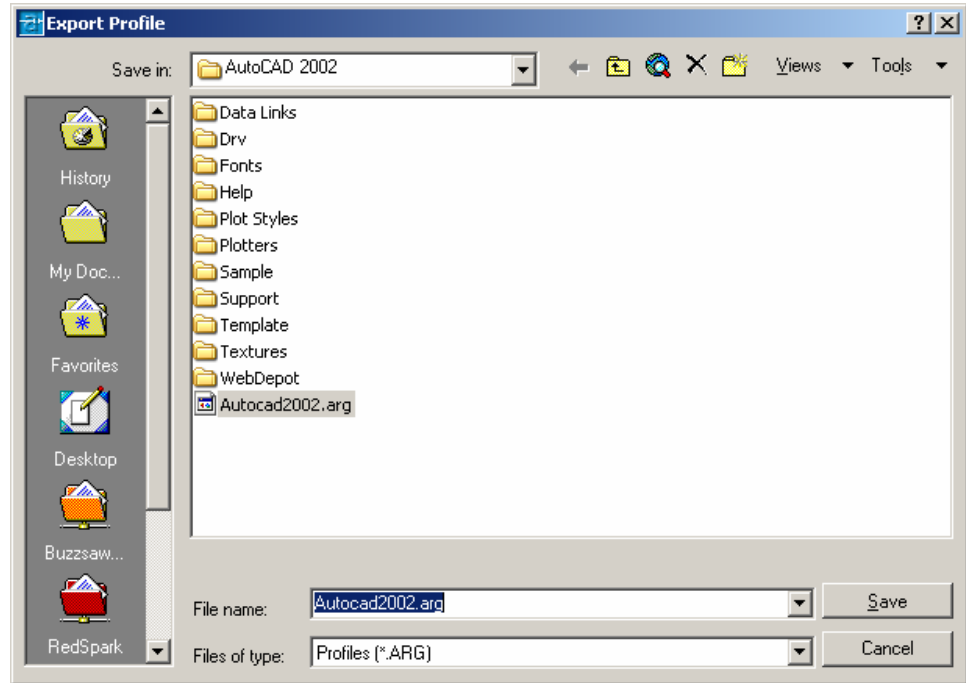
3. The prompt for loading the template menus pops up. Click **yes** to this dialog box.



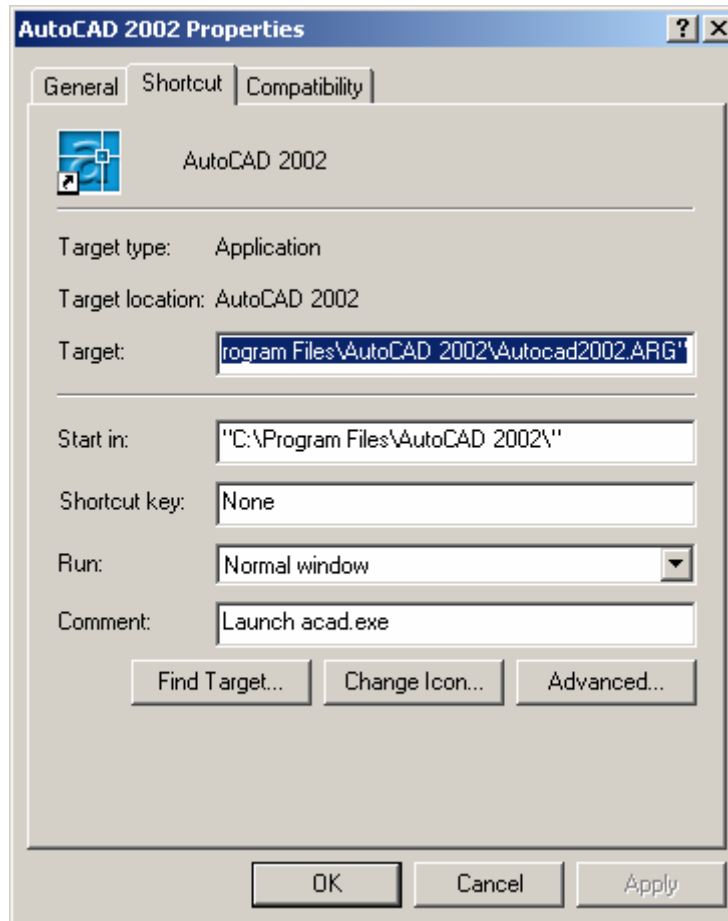
4. Now go to **Settings > Options**.
5. In the **Options** dialog box, select the **Profiles** tab.
6. Click **Add to List**.
7. Rename the new profile as **Autocad2002**, then click **Apply/Close** and set it to current.



8. Click on the Autocad2002 and click on **Export** tab and save the profile as **Autocad2002.arg** in the C:\Program Files\Autocad 2002 folder.



9. Click on **Save**. And set the Autocad2002 profile to current.
10. Close the program and go to your desktop and click on the **Autocad2002** icon and right click on it to choose **properties**.
11. Set the target path so that it indicates as below:
"C:\Program Files\AutoCAD 2002\acad.exe" /p "C:\Program Files\AutoCAD 2002\Autocad2002.ARG"



12. Click on **Apply** and click **ok** to close. Then double click on the icon to open **Autocad** and you will see that **Autocad** opens up.
13. Go to the APDesign icon, open it up and load the APDesign menus by going to **menuload** and then going to **Settings- profile- APDesign.mnu** – Set current.
14. Close the APDesign program, reopen it and it should now have APDesign icons.